



4 Section Bandpass Filter With SMA Female Connectors Operating From 869 MHz to 894 MHz With a 25 MHz Passband

Bandpass Filters Technical Data Sheet

PE8706

Features

- Pass band of 25 MHz
- 869 to 894 MHz
- Four section
- Combine filter design
- Minimum 50 dB rejection at 781.5 MHz and 981.5 MHz (about 87.5 MHz from band edge)
- Maximum insertion loss of 1.5 dB
- Female SMA connectors

Applications

- GSM

Description

The PE8706 is a four section band pass filter that is useful for filtering for GSM uses. The pass band is 25 MHz, or 869 to 894 MHz. Implementing a combine design, the filter has excellent minimum rejection of 50 dB at 781.5 MHz and 981.5 MHz, or about 87.5 MHz from the band edges. It has a maximum insertion loss of 1.5 dB. The PE8706 has SMA Female connectors.

Electrical Specifications

Description	Minimum	Typical	Maximum	Units
Passband Frequency	869		894	MHz
Impedance		50		Ohms
Insertion Loss			1.5	dB
Passband VSWR		1.5:1		
Rejection at 781.5 MHz	50			dB
Rejection at 981.5 MHz	50			dB
Input Power, CW			5	Watts

Electrical Specification Notes: Values at +25°C, sea level.

Mechanical Specifications

Size

Length	2 in [50.8 mm]
Width	2.41 in [61.21 mm]
Height	0.53 in [13.46 mm]
Weight	0.2 lbs [90.72 g]

Configuration

Design	Combine
Number of Sections	4
Package Style	Connectorized Module
Connector 1	SMA Female
Connector 2	SMA Female

Click the following link (or enter part number in "SEARCH" on website) to obtain additional part information including price, inventory and certifications: [4 Section Bandpass Filter With SMA Female Connectors Operating From 869 MHz to 894 MHz With a 25 MHz Passband PE8706](#)



4 Section Bandpass Filter With SMA Female Connectors
Operating From 869 MHz to 894 MHz With a 25 MHz Passband

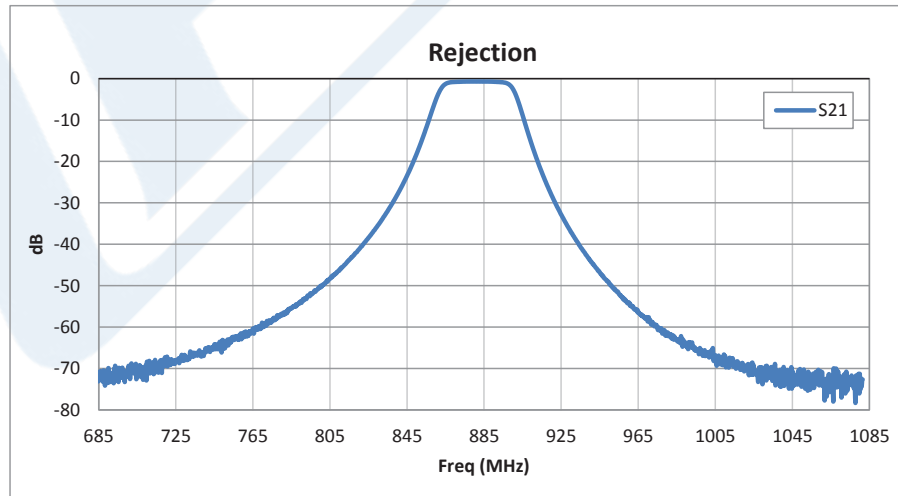
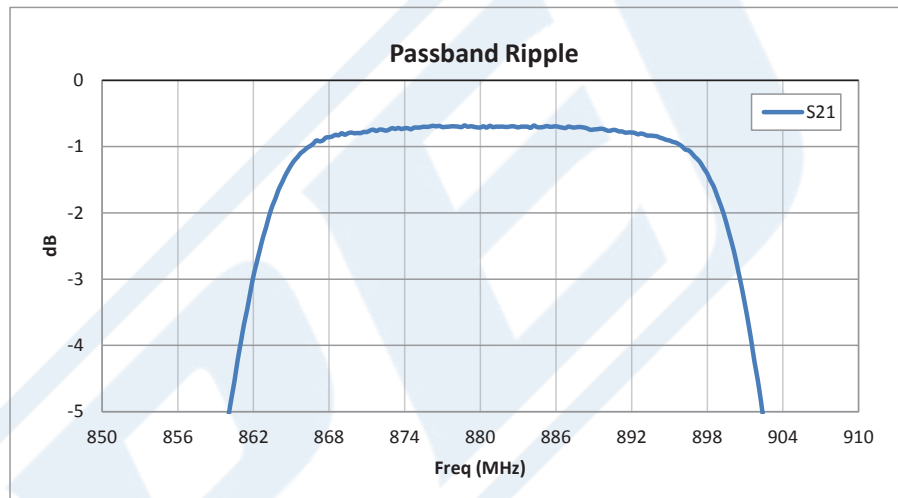
Bandpass Filters Technical Data Sheet

PE8706

Compliance Certifications (visit www.Pasternack.com for current document)
RoHS Compliant
REACH Compliant 12/17/2015

Plotted and Other Data
Notes:

Typical Performance Data



Click the following link (or enter part number in "SEARCH" on website) to obtain additional part information including price, inventory and certifications: [4 Section Bandpass Filter With SMA Female Connectors Operating From 869 MHz to 894 MHz With a 25 MHz Passband PE8706](#)

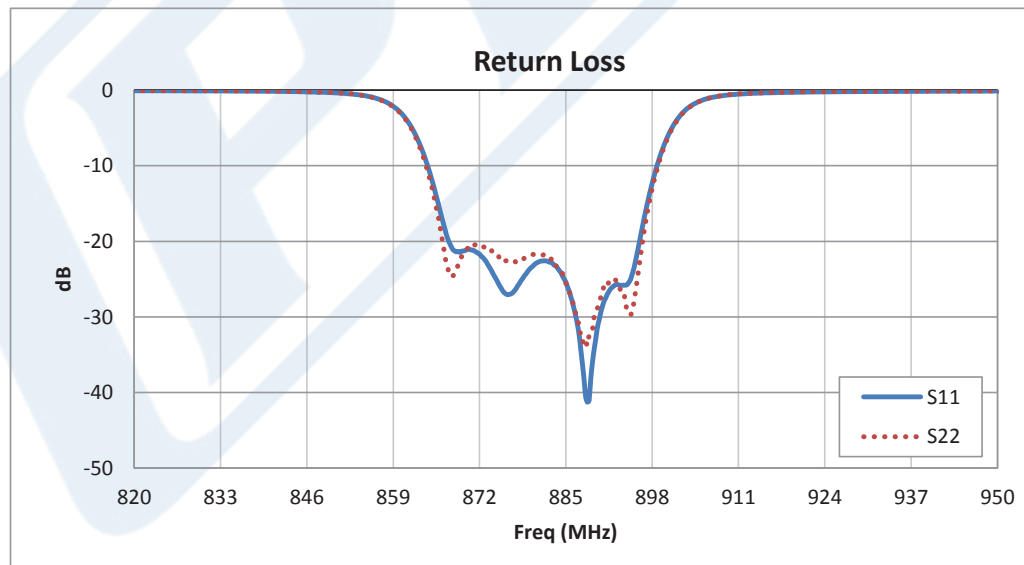
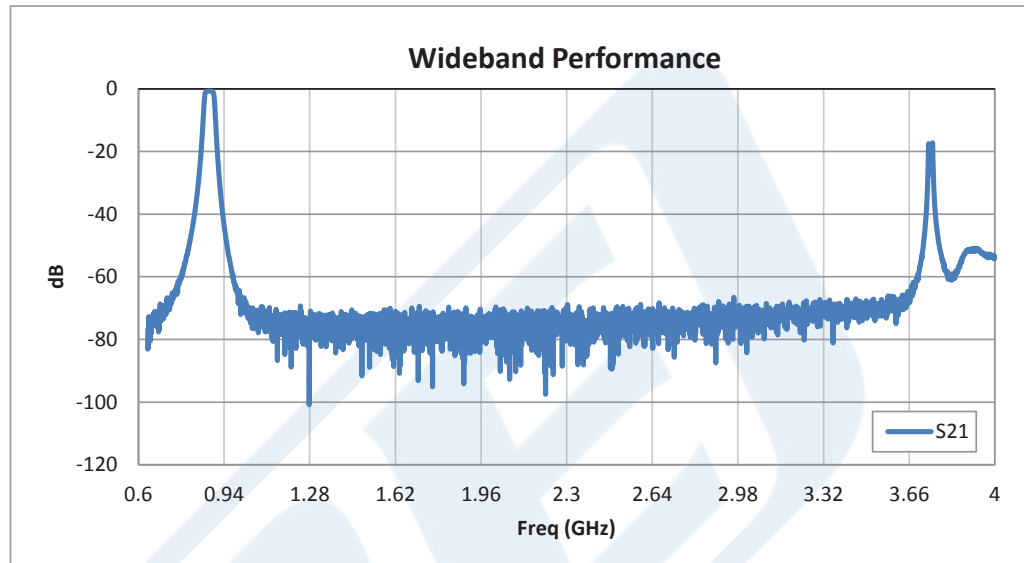




4 Section Bandpass Filter With SMA Female Connectors
Operating From 869 MHz to 894 MHz With a 25 MHz Passband

Bandpass Filters Technical Data Sheet

PE8706



4 Section Bandpass Filter With SMA Female Connectors Operating From 869 MHz to 894 MHz With a 25 MHz Passband from Pasternack Enterprises has same day shipment for domestic and International orders. Our RF, microwave and millimeter wave products maintain a 99% availability and are part of the broadest selection in the industry.

Click the following link (or enter part number in "SEARCH" on website) to obtain additional part information including price, inventory and certifications: [4 Section Bandpass Filter With SMA Female Connectors Operating From 869 MHz to 894 MHz With a 25 MHz Passband PE8706](#)





4 Section Bandpass Filter With SMA Female Connectors Operating From 869 MHz to 894 MHz With a 25 MHz Passband

Bandpass Filters Technical Data Sheet

PE8706

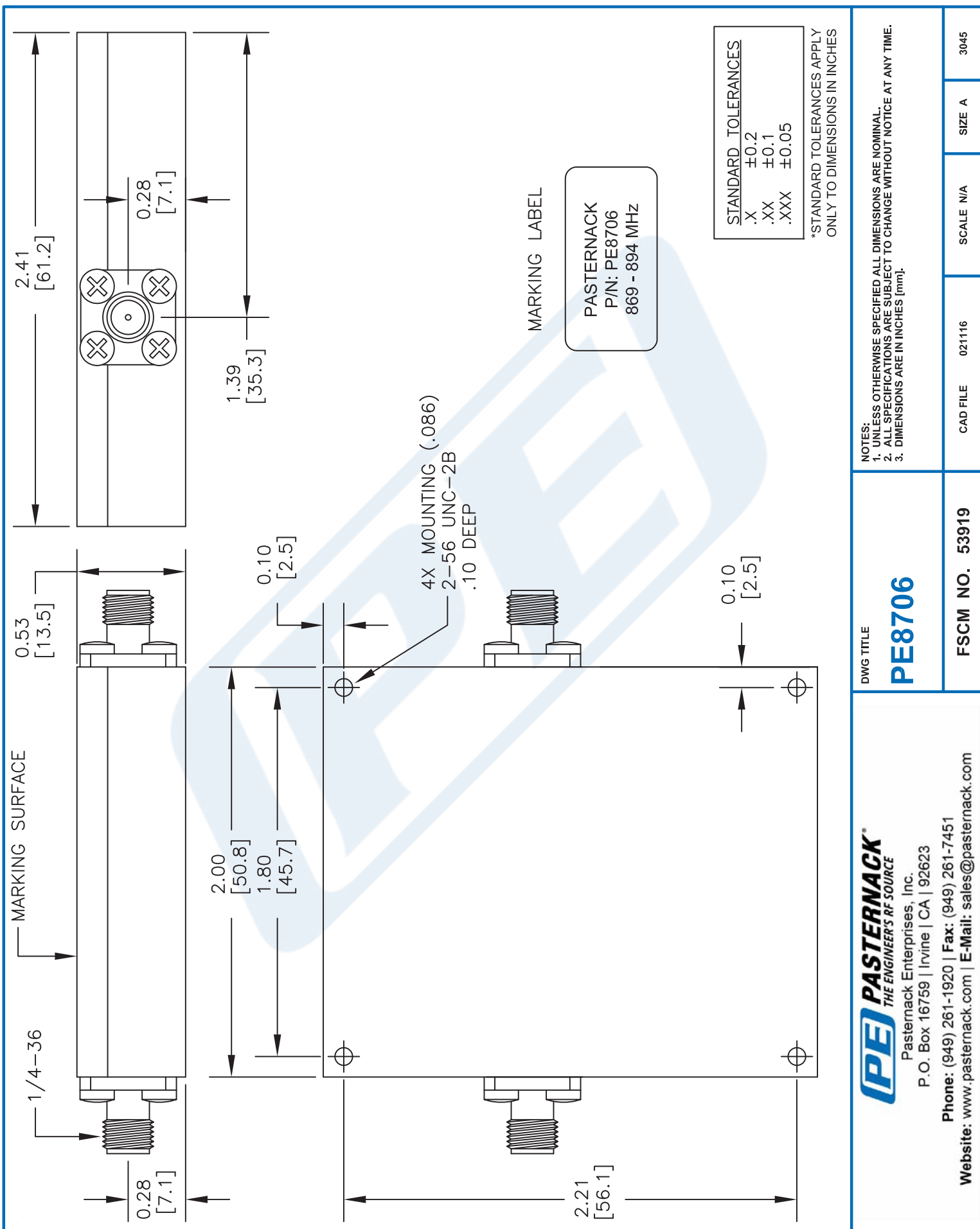
Click the following link (or enter part number in "SEARCH" on website) to obtain additional part information including price, inventory and certifications: [4 Section Bandpass Filter With SMA Female Connectors Operating From 869 MHz to 894 MHz With a 25 MHz Passband PE8706](http://www.pasternack.com/4-section-band-pass-filter-869-mhz-894-mhz-passband-25-mhz-pe8706-p.aspx)

URL: <http://www.pasternack.com/4-section-band-pass-filter-869-mhz-894-mhz-passband-25-mhz-pe8706-p.aspx>

The information contained in this document is accurate to the best of our knowledge and representative of the part described herein. It may be necessary to make modifications to the part and/or the documentation of the part, in order to implement improvements. Pasternack reserves the right to make such changes as required. Unless otherwise stated, all specifications are nominal. Pasternack does not make any representation or warranty regarding the suitability of the part described herein for any particular purpose, and Pasternack does not assume any liability arising out of the use of any part or documentation.

PE8706 CAD Drawing

4 Section Bandpass Filter With SMA Female Connectors Operating
From 869 MHz to 894 MHz With a 25 MHz Passband



NOTES:
1. UNLESS OTHERWISE SPECIFIED ALL DIMENSIONS ARE NOMINAL.
2. ALL SPECIFICATIONS ARE SUBJECT TO CHANGE WITHOUT NOTICE AT ANY TIME.
3. DIMENSIONS ARE IN INCHES [mm].

DWG TITLE		CAD FILE		SCALE		SIZE	
PE8706		021116		N/A		A	
FSCM NO. 53919		021116		N/A		A	
						3045	

PE PASTERNAK
THE ENGINEER'S RF SOURCE

Pasternack Enterprises, Inc.
P.O. Box 16759 | Irvine | CA | 92623

Phone: (949) 261-1920 | Fax: (949) 261-7451
Website: www.pasternack.com | E-Mail: sales@pasternack.com