



Absorptive SPST PIN Diode Switch Operating From 2 GHz to 26.5 GHz Up to +30 dBm and SMA

PIN Diode Switches Technical Data Sheet

PE71S2016

Features

- SPST Absorptive Switch
- 2 GHz to 26.5 GHz
- Insertion Loss 4.5 dB max
- Isolation 25 dB min
- Power Input +30 dBm CW max

Applications

- Test & Measurement
- Military Communication
- Commercial Communication

Description

The PE71S2016 is a SINGLE POLE SINGLE THROW (SPST) ABSORPTIVE PIN DIODE SWITCH that operates from 2 to 26.5 GHz. Port 2 is terminated in 50 ohms when switched in the isolation (off) state. Electrical performance includes 4.5 dB max insertion loss, -7 dB max return loss, 25 dB min isolation, and 150 nsec max switching speed. The design incorporates TTL-compatible driver circuitry for accurate logic control. Operational temperature range is -30°C to +60°C and dual voltage controls of +5 Vdc and -5 Vdc are required. The package interface uses solder terminals and SMA Female connectors.

Electrical Specifications

TTL Control

Off/Isolation: "0"

On/Low Loss: "1"

Description	Minimum	Typical	Maximum	Units
Frequency Range	2		26.5	GHz
Impedance		50		Ohms
Return Loss			-7	dB
Insertion Loss			4.5	dB
Isolation	25			dB
Switching Time			150	ns
Input Power (CW)			1	Watts
Positive Operating Voltage		5		Vdc
Negative Operating Voltage		-5		Vdc
Operating Temperature	-30		+60	deg C

Electrical Specification Notes:

Specified switching time includes TTL driver delay.

Click the following link (or enter part number in "SEARCH" on website) to obtain additional part information including price, inventory and certifications: [Absorptive SPST PIN Diode Switch Operating From 2 GHz to 26.5 GHz Up to +30 dBm and SMA PE71S2016](#)



Absorptive SPST PIN Diode Switch Operating From
2 GHz to 26.5 GHz Up to +30 dBm and SMA

PIN Diode Switches Technical Data Sheet

PE71S2016

Mechanical Specifications

Size

Length	1.2 in [30.48 mm]
Width	1.2 in [30.48 mm]
Height	0.6 in [15.24 mm]
Weight	0.11 lbs [49.9 g]
Design	Absorptive, SPST
RF Connector	SMA Female
TTL Control Connector	Solder Pin

Environmental Specifications

Temperature

Operating Range	-30 to +60 deg C
ESD Sensitivity	ESD Sensitive Material. Transport material in Approved ESD bags. Handle only in ESD Workstation.



Compliance Certifications (see [product page](#) for current document)

Plotted and Other Data

Notes:

Click the following link (or enter part number in "SEARCH" on website) to obtain additional part information including price, inventory and certifications: [Absorptive SPST PIN Diode Switch Operating From 2 GHz to 26.5 GHz Up to +30 dBm and SMA PE71S2016](#)

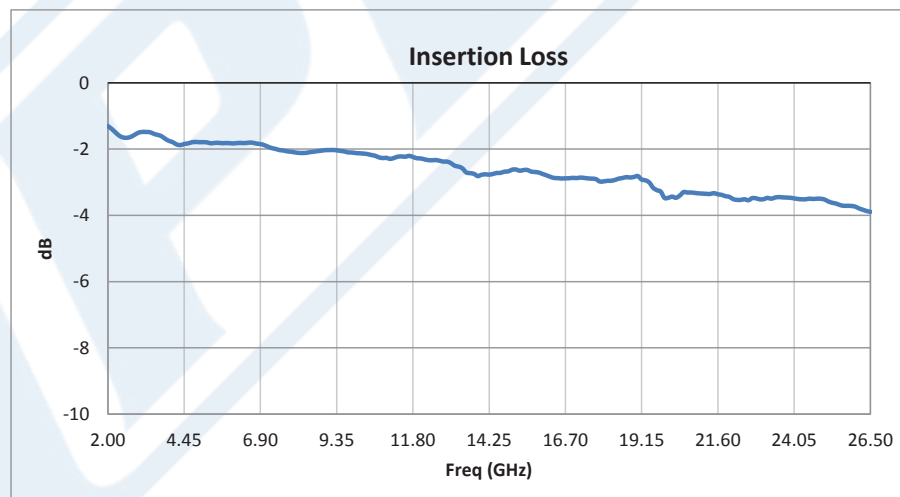
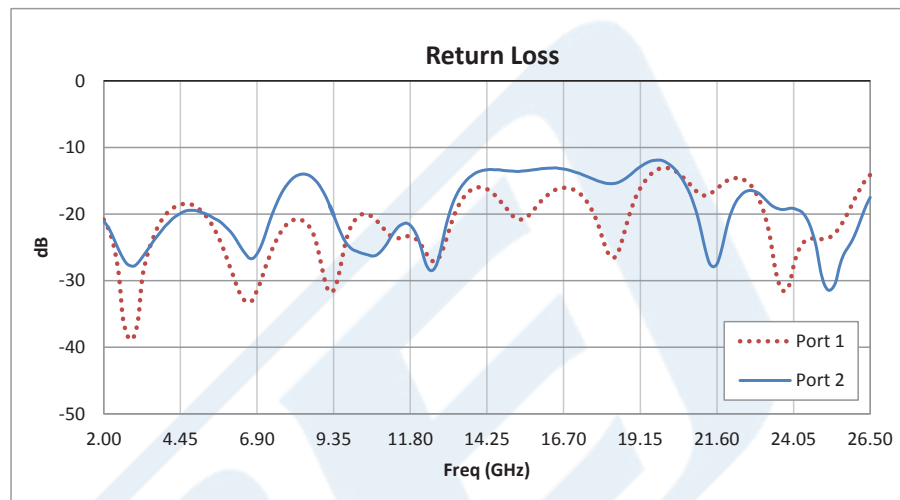


Absorptive SPST PIN Diode Switch Operating From
2 GHz to 26.5 GHz Up to +30 dBm and SMA

PIN Diode Switches Technical Data Sheet

PE71S2016

Typical Performance Data



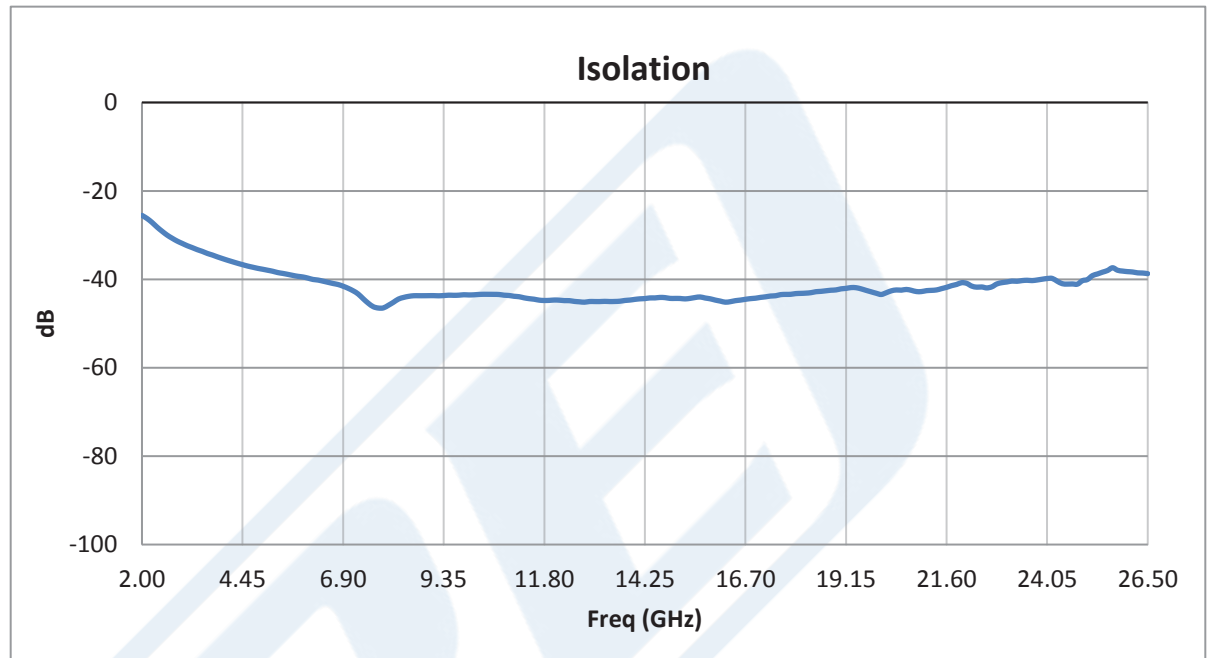
Click the following link (or enter part number in "SEARCH" on website) to obtain additional part information including price, inventory and certifications: [Absorptive SPST PIN Diode Switch Operating From 2 GHz to 26.5 GHz Up to +30 dBm and SMA PE71S2016](#)



Absorptive SPST PIN Diode Switch Operating From 2 GHz to 26.5 GHz Up to +30 dBm and SMA

PIN Diode Switches Technical Data Sheet

PE71S2016



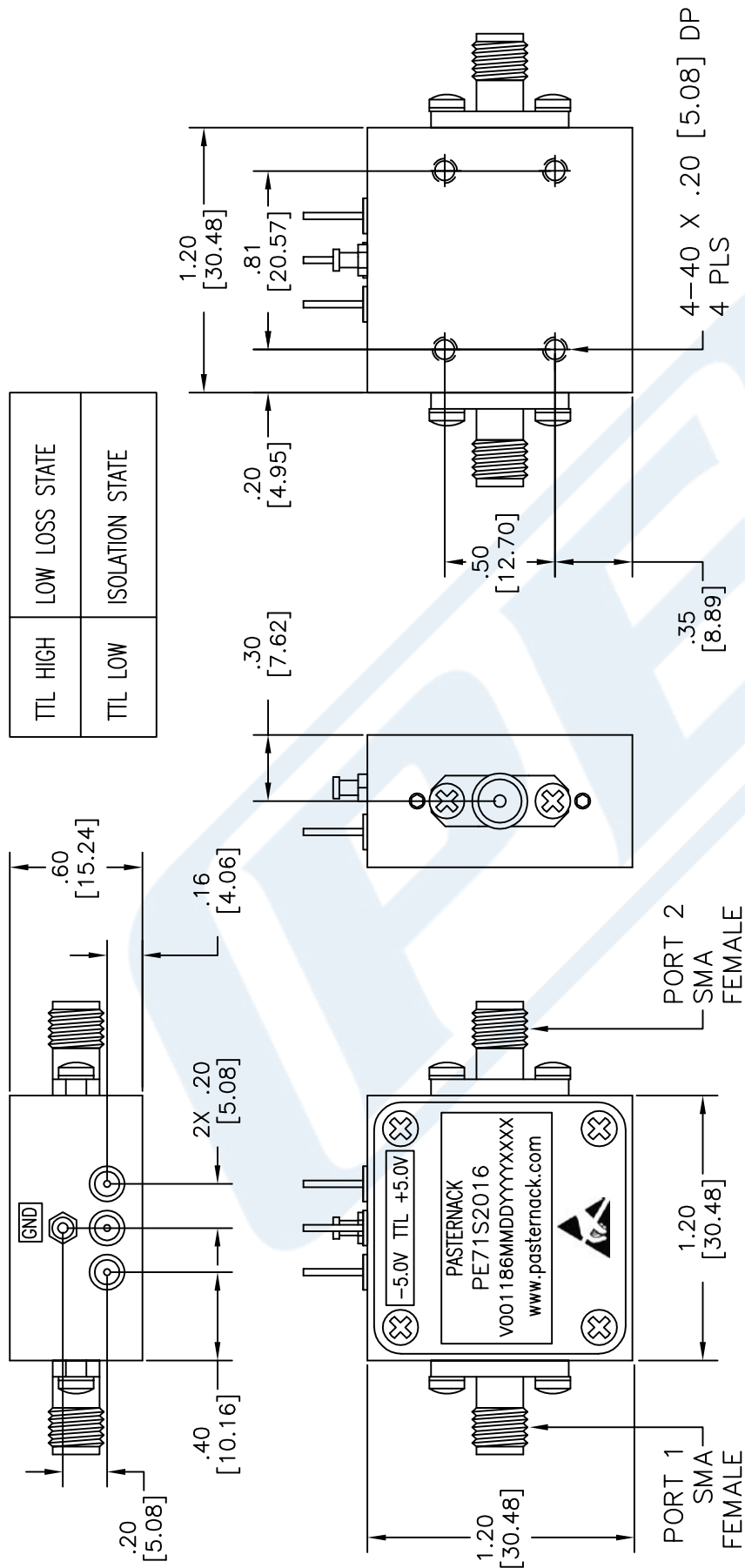
Absorptive SPST PIN Diode Switch Operating From 2 GHz to 26.5 GHz Up to +30 dBm and SMA from Pasternack Enterprises has same day shipment for domestic and International orders. Our RF, microwave and millimeter wave products maintain a 99.4% availability and are part of the broadest selection in the industry.

Click the following link (or enter part number in "SEARCH" on website) to obtain additional part information including price, inventory and certifications: [Absorptive SPST PIN Diode Switch Operating From 2 GHz to 26.5 GHz Up to +30 dBm and SMA PE71S2016](https://www.pasternack.com/absorptive-spst-pin-diode-switch-26.5-ghz-30-dbm-sma-pe71s2016-p.aspx)

URL: <https://www.pasternack.com/absorptive-spst-pin-diode-switch-26.5-ghz-30-dbm-sma-pe71s2016-p.aspx>

The information contained in this document is accurate to the best of our knowledge and representative of the part described herein. It may be necessary to make modifications to the part and/or the documentation of the part, in order to implement improvements. Pasternack reserves the right to make such changes as required. Unless otherwise stated, all specifications are nominal. Pasternack does not make any representation or warranty regarding the suitability of the part described herein for any particular purpose, and Pasternack does not assume any liability arising out of the use of any part or documentation.

Absorptive SPST PIN Diode Switch Operating From 2 GHz to 26.5 GHz Up to +30 dBm and SMA



UNLESS OTHERWISE SPECIFIED:

DIMENSIONS ARE IN: inches

TOLERANCES ARE: [mm]

.XX ± .01 [±.25]

.XX ±.001 [±.025]

* THESE DIMENSIONS AND TOLERANCES
SUPERSEDE NOTE #1 ON TITLE BLOCK.

NOTES:

1. UNLESS OTHERWISE SPECIFIED ALL DIMENSIONS ARE NOMINAL.
2. ALL SPECIFICATIONS ARE SUBJECT TO CHANGE WITHOUT NOTICE AT ANY TIME.
3. DIMENSIONS ARE IN INCHES (mm).
4. FITS MIL-C-17 AND EQUIVALENT CABLES.

TTL HIGH	LOW LOSS STATE
TTL LOW	ISOLATION STATE

DWG TITLE
PE71S2016

FSCM NO. 53919

CAD FILE **082615**

SIZE A

2233

PE PASTERNAK®
THE ENGINEER'S RF SOURCE

Pasternack Enterprises, Inc.
P.O. Box 16759 | Irvine | CA | 92623

Phone: (949) 261-1920 | **Fax:** (949) 261-7451
Website: www.pasternack.com | **E-Mail:** sales@pasternack.com