



50 Watt RF Load Up To 18 GHz With SMA Male Input
Square Body Black Anodized Aluminum Heatsink

TECHNICAL DATA SHEET

PE6211

Configuration

Connector	SMA Male
Connector Specification	MIL-STD-348
Heat Sink	Black Anodized Aluminum Heatsink
Connection Method	Standard
Body Style	Straight

Electrical Specifications (Values at 25°C, sea level)

Description	Minimum	Typical	Maximum	Units
Frequency Range	DC		18	GHz
Impedance		50		Ohms
VSWR			1.6:1	
Input Power			50	Watts
Peak Power			500	Watts

Specifications by Frequency

Description	F1	F2	F3	F4	F5	Units
Range	DC to 6	6 to 12.4	12.4 to 16	16 to 18		GHz
VSWR	1.3:1	1.45:1	1.6:1	1.8:1		

Mechanical Specifications

Temperature

Operating Range	-65 to +125 deg C
Color	Black

Connector

Type	SMA Male
Inner Conductor Material and Plating	Beryllium Copper, Gold
Coupling Nut Material and Plating	Passivated Stainless Steel
Hex Size	5/16 Inch
Body Material and Plating	Passivated Stainless Steel
Dielectric Type	PTFE

Compliance Certifications (visit www.Pasternack.com for current document)

RoHS Compliant

Plotted and Other Data

Notes:

- Values at +25 °C, sea level

Click the following link (or enter part number in "SEARCH" on website) to obtain additional part information including price, inventory and certifications: [50 Watt RF Load Up To 18 GHz With SMA Male Input Square Body Black Anodized Aluminum Heatsink PE6211](#)

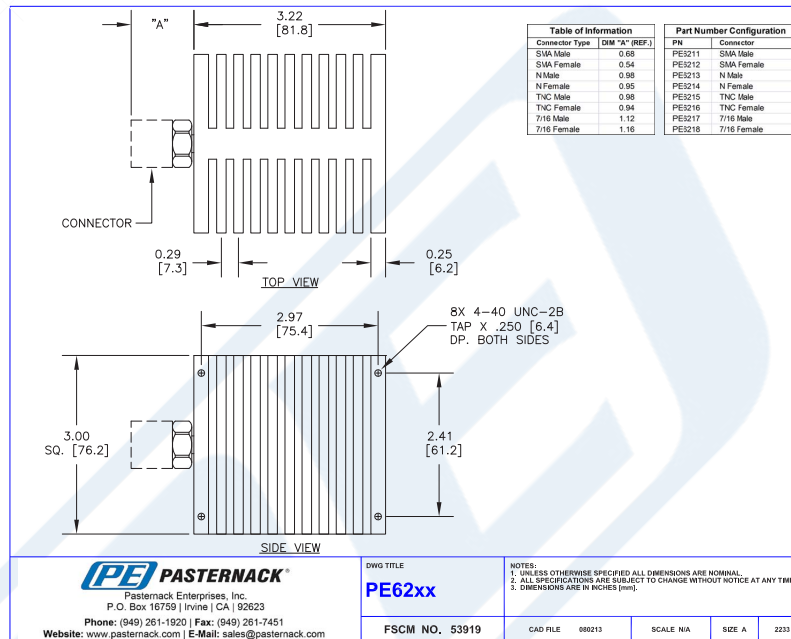




50 Watt RF Load Up To 18 GHz With SMA Male Input
Square Body Black Anodized Aluminum Heatsink

TECHNICAL DATA SHEET PE6211

Outline Drawing



50 Watt RF Load Up To 18 GHz With SMA Male Input Square Body Black Anodized Aluminum Heatsink from Pasternack Enterprises has same day shipment for domestic and International orders. Our RF, microwave and millimeter wave products maintain a 99% availability and are part of the broadest selection in the industry.

Click the following link (or enter part number in "SEARCH" on website) to obtain additional part information including price, inventory and certifications: [50 Watt RF Load Up To 18 GHz With SMA Male Input Square Body Black Anodized Aluminum Heatsink PE6211](http://www.pasternack.com/50-watts-sma-male-rf-load-up-to-18-ghz-pe6211-p.aspx)

URL: <http://www.pasternack.com/50-watts-sma-male-rf-load-up-to-18-ghz-pe6211-p.aspx>

The information contained in this document is accurate to the best of our knowledge and representative of the part described herein. It may be necessary to make modifications to the part and/or the documentation of the part, in order to implement improvements. Pasternack reserves the right to make such changes as required. Unless otherwise stated, all specifications are nominal. Pasternack does not make any representation or warranty regarding the suitability of the part described herein for any particular purpose, and Pasternack does not assume any liability arising out of the use of any part or documentation.

