



## 900 MHz 14 dBi Heavy-Duty Yagi Antenna

### Antennas Technical Data Sheet

PE51YA1014

#### Features

- Superior performance
- 30° beam-width
- Heavy-duty 3/4" aluminum boom
- Solid 3/8" aluminum elements
- Solid 1/4" aluminum mounting plate

#### Applications

- 900MHz ISM Band & 900 MHz Cellular
- Non Line of Sight (NLOS)
- RFID & SCADA
- LPWAN, LoRA, IoT, M2M
- Wireless LAN systems & Point to Multipoint applications

#### Description

The HyperGain PE51YA1014 High-Performance Yagi Antenna combines high gain with a wide 30° beam-width. It is ideally suited for directional applications in the 900 GHz ISM and GSM bands as well as Non Line of Sight (NLOS) and Point to Multi-Point installations. Typical applications include 900 MHz Wireless LAN, SCADA, LPWAN, LoRA, IoT, M2M, and 900 MHz Cellular.

This antenna features a heavy-duty 3/4" aluminum boom and solid 3/8" aluminum elements. Secure mounting is assured by a solid 1/4" aluminum mounting plate and two stainless steel V-bolts.

#### Configuration

Design	Yagi
Band Type	Single
Radiation Pattern	Directional
Polarization	Vertical or Horizontal
Cable Length	12 in [304.8 mm]
Connector Type	N Female
Number of Ports	1
Lightning Protection	DC Short

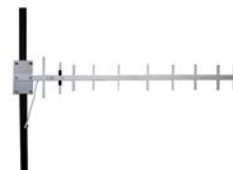
#### Electrical Specifications

Description	Minimum	Typical	Maximum	Units
Input VSWR			1.5:1	
Impedance		50		Ohms
Gain		14		dBi
Front to Back Ratio		15		dB
Input Power			50	Watts

#### Specifications by Band

Description	Band 1	Band 2	Band 3	Band 4	Band 5	Units
Range	900-928					MHz
Gain	14					dBi
Horizontal Beam Width	30					Degees
Vertical Beam Width	30					Degees

Click the following link (or enter part number in "SEARCH" on website) to obtain additional part information including price, inventory and certifications: [900 MHz 14 dBi Heavy-Duty Yagi Antenna PE51YA1014](#)



## 900 MHz 14 dBi Heavy-Duty Yagi Antenna

### Antennas Technical Data Sheet

PE51YA1014

Maximum Input Power

50

Watts

#### Mechanical Specifications

Radome Material

Polymer

#### Size

Overall Length

43 in [109.22 cm]

Mounting Mast Diameter

2.38 in [60.45 mm]

Weight

5.9 lbs [2.68 kg]

#### Environmental Specifications

##### Temperature

Operating Range

-40 to +85 deg C

Wind Loading

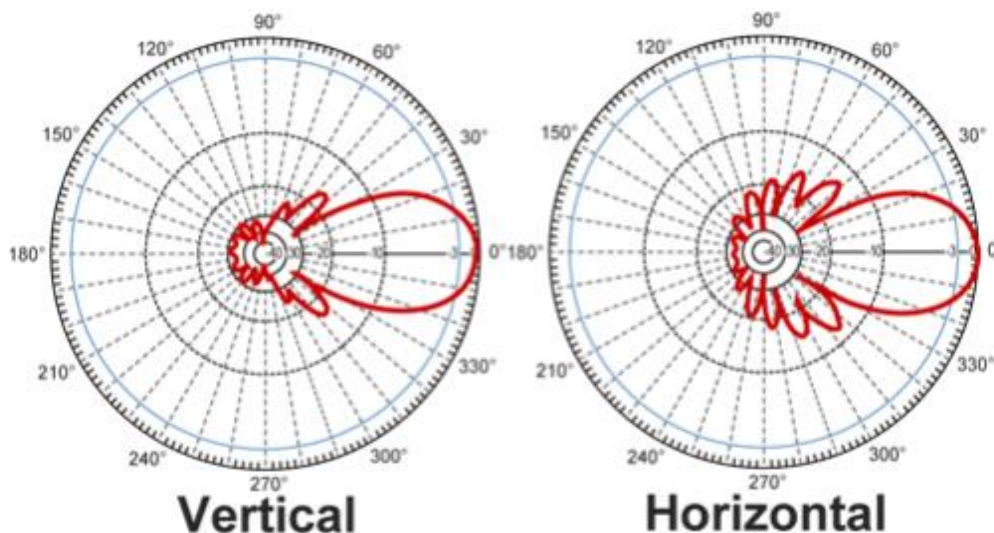
150 MPH [241.4 KPH]

**Compliance Certifications** (see [product page](#) for current document)

#### Plotted and Other Data

Notes:

#### Typical Radiation Pattern



Click the following link (or enter part number in "SEARCH" on website) to obtain additional part information including price, inventory and certifications: [900 MHz 14 dBi Heavy-Duty Yagi Antenna PE51YA1014](#)



## 900 MHz 14 dBi Heavy-Duty Yagi Antenna

### Antennas Technical Data Sheet

PE51YA1014

900 MHz 14 dBi Heavy-Duty Yagi Antenna from Pasternack Enterprises has same day shipment for domestic and International orders. Our RF, microwave and millimeter wave products maintain a 99.4% availability and are part of the broadest selection in the industry.

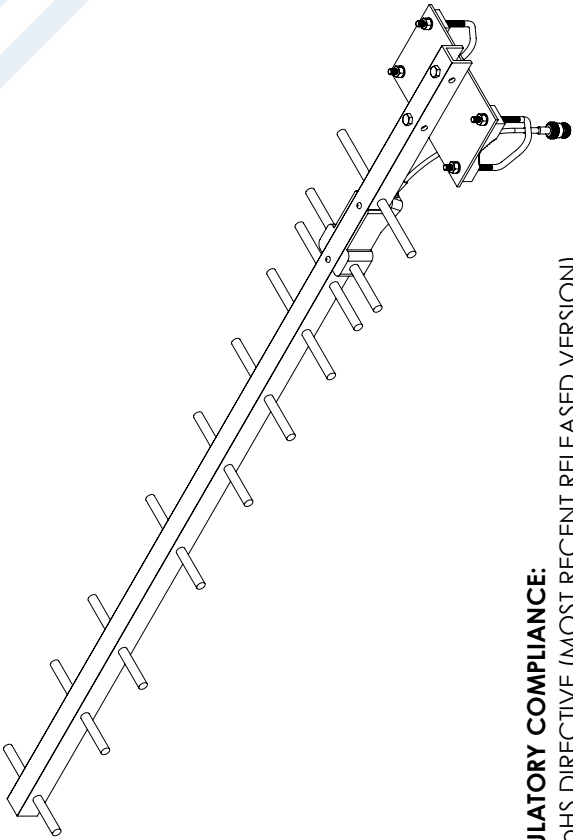
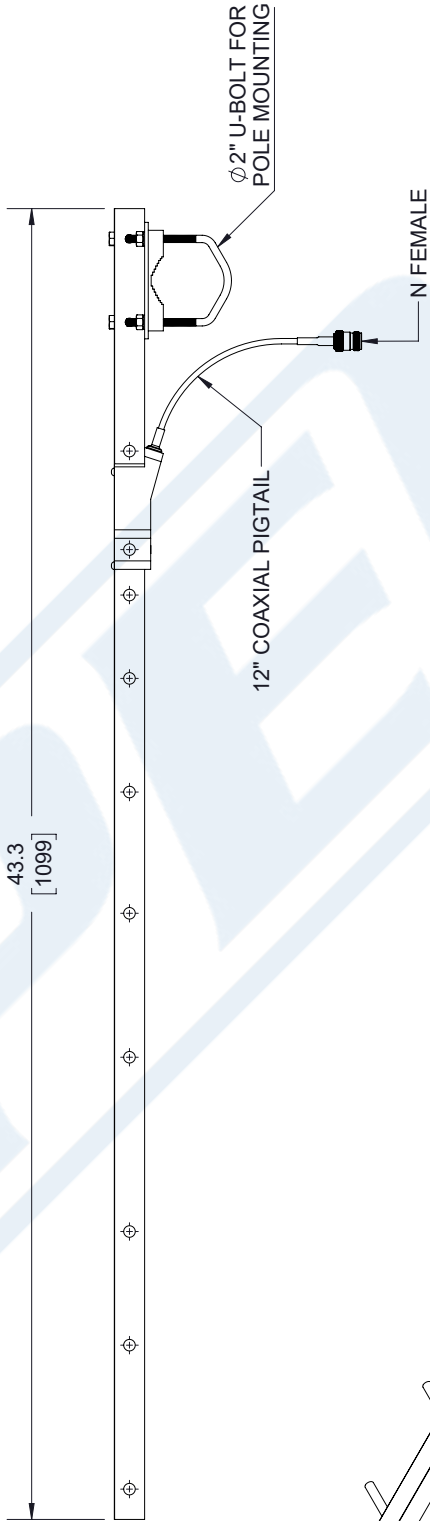
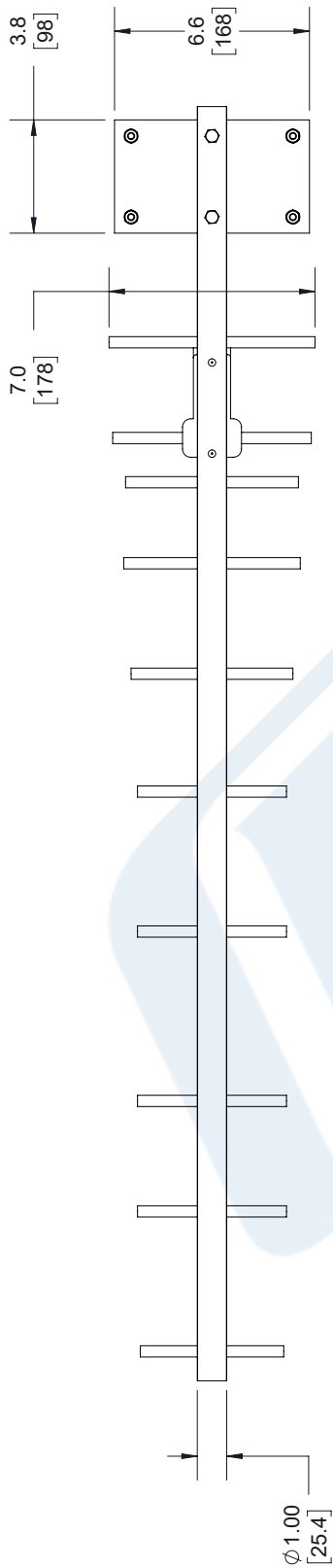
Click the following link (or enter part number in "SEARCH" on website) to obtain additional part information including price, inventory and certifications: [900 MHz 14 dBi Heavy-Duty Yagi Antenna PE51YA1014](https://www.pasternack.com/single-antenna-14-dbi-gain-n-pe51ya1014-p.aspx)

URL: <https://www.pasternack.com/single-antenna-14-dbi-gain-n-pe51ya1014-p.aspx>

The information contained in this document is accurate to the best of our knowledge and representative of the part described herein. It may be necessary to make modifications to the part and/or the documentation of the part, in order to implement improvements. Pasternack reserves the right to make such changes as required. Unless otherwise stated, all specifications are nominal. Pasternack does not make any representation or warranty regarding the suitability of the part described herein for any particular purpose, and Pasternack does not assume any liability arising out of the use of any part or documentation.

PE51YA1014 CAD Drawing  
900 MHz 14 dBi Heavy-Duty Yagi Antenna

REVISIONS			
REV.	DESCRIPTION	DATE	APPROVED
A	INITIAL RELEASE	2/21/2020	M.MILLER



THIRD-ANGLE PROJECTION

THE INFORMATION AND DESIGN IN THIS DOCUMENT IS THE PROPERTY OF PASTERNAK CORPORATION. ALL RIGHTS RESERVED.

SHEET 1 OF 1

SCALE N/A

**PASTERNAK**  
an INFINITI<sup>®</sup> brand

Pasternack Enterprises, Inc.  
P.O. Box 16759, Irvine, CA 92623.  
Phone: 1.949.261.1920 | 1.866.727.8376  
Fax: 1.949.261.7451  
Website: [www.pasternack.com](http://www.pasternack.com)  
E-mail: [sales@pasternack.com](mailto:sales@pasternack.com)

UNLESS OTHERWISE SPECIFIED  
LEADING DIMENSIONS ARE INCHES  
DIMENSIONS IN [ ] ARE MILLIMETERS

TOLERANCES:	FRACTIONS
.X = ± .2	[ .08 ]
.XX = ± .02	[ .51 ]
.XXX = ± .005	[ .13 ]

CABLE LENGTH (L) TOLERANCES:

L ≤ 12 [305]	± .1 [25] / -0
12 [305] < L ≤ 60 [1524]	± .2 [51] / -0
60 [1524] < L ≤ 120 [3048]	± .4 [102] / -0
120 [3048] < L ≤ 300 [7620]	± .6 [152] / -0
300 [7620] < L	± .5% L / -0

ALL DIMENSIONS SHOWN  
ARE FOR REFERENCE ONLY.

SIZE A

CAGE CODE 53919

DRAWN BY K.DANG

ITEM NO. PE51YA1014

REV. A

**REGULATORY COMPLIANCE:**  
EU ROHS DIRECTIVE (MOST RECENT RELEASED VERSION)

THESE COMMODITIES, TECHNOLOGY OR SOFTWARE WERE EXPORTED FROM THE UNITED STATES IN ACCORDANCE WITH THE EXPORT ADMINISTRATION REGULATIONS. DIVERSION CONTRARY TO U.S. LAW PROHIBITED.