



SMA Female Connector Solder Attachment .062 inch
End Launch PCB, .020 inch x .010 inch Contact

RF Connectors Technical Data Sheet

PE4543

Configuration

- SMA Female Connector
- 50 Ohms
- Straight Body Geometry
- .062 inch End Launch Interface Type
- Solder Attachment

Features

- Gold Plated Contact

Applications

- General Purpose Test
- PCB Applications

Description

Pasternack's PE4543 SMA female connector with solder attachment for .062 inch end launch PCB is part of our full line of RF components available for same-day shipping.

Our SMA female connector PE4543 datasheet specifications and drawing with dimensions are shown below in this PDF. Pasternack's broad catalog of RF, microwave and millimeter wave connectors allows designers to configure and customize their signal connections however they like. Whether the need is to provide an I/O for a board design, or simply create a custom cable assembly configuration, Pasternack has the right connector for the job. Pasternack can also expertly build your custom cable assemblies for you and ship same-day.

Mechanical Specifications

Size

Length	0.562 in [14.27 mm]
Width/Dia.	0.375 in [9.53 mm]
Height	0.312 in [7.92 mm]
Weight	0.005 lbs [2.27 g]

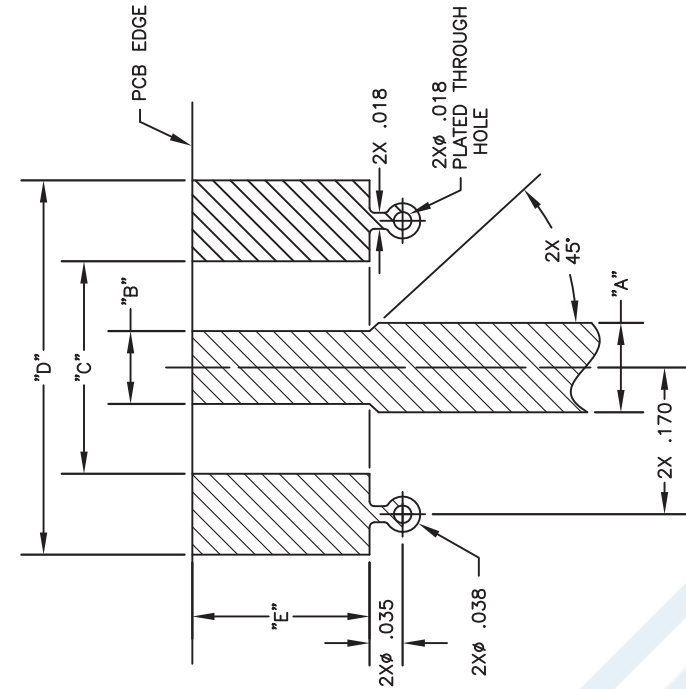
Material Specifications

Description	Material	Plating
Contact		Gold
Insulation	PTFE	
Body	Brass	Gold

Click the following link (or enter part number in "SEARCH" on website) to obtain additional part information including price, inventory and certifications: [SMA Female Connector Solder Attachment .062 inch End Launch PCB, .020 inch x .010 inch Contact PE4543](#)

PE4543 CAD Drawing

SMA Female Connector Solder Attachment .062 inch End
Launch PCB, .020 inch x .010 inch Contact

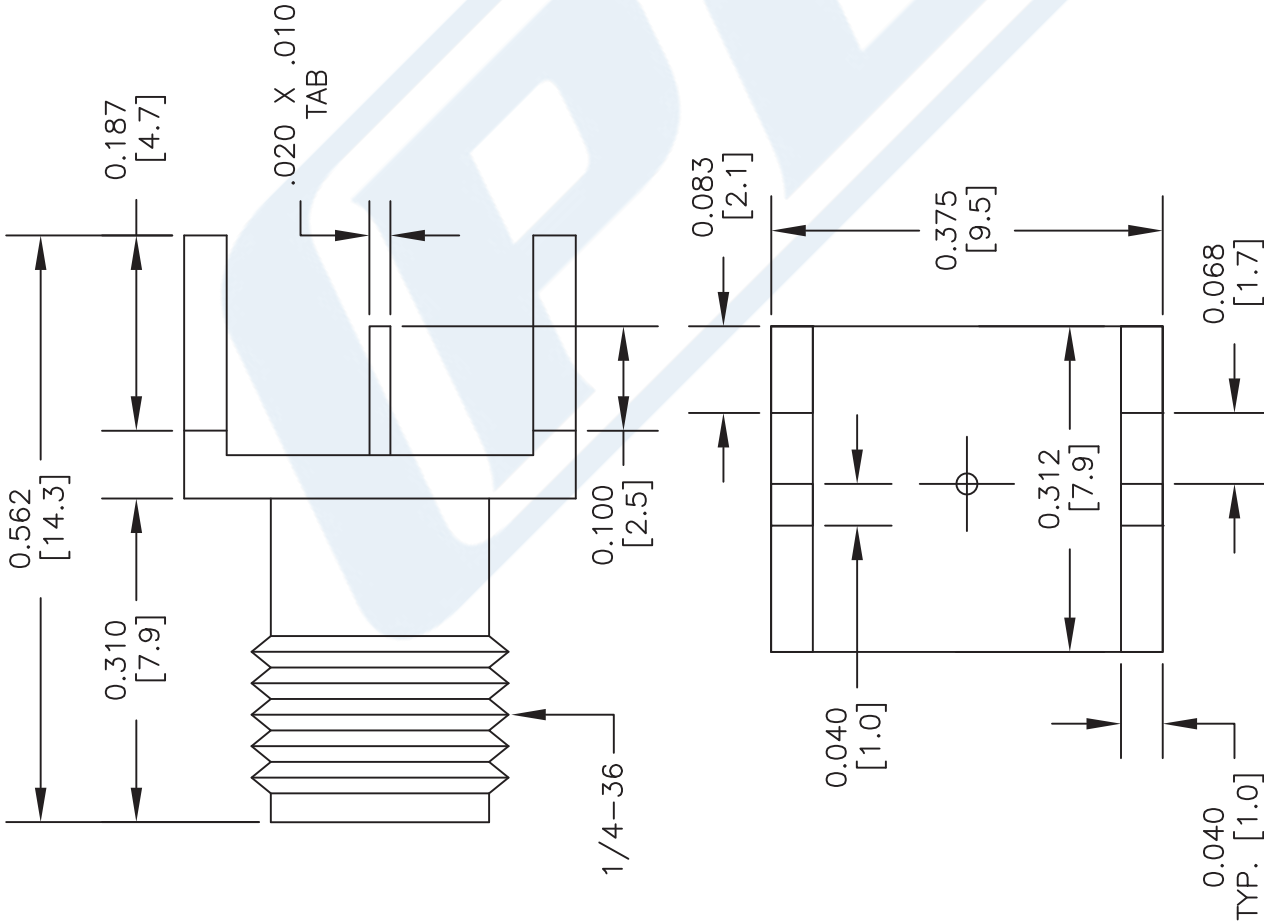


MOUNTING CHART							
PART NO.	BASE WIDTH	BOARD THICK	"A"	"B"	"C"	"D"	"E"
PE4542	.375	.062	.103	.090	.250	.440	.200
PE4543	.375	.062	.103	.090	.250	.440	.200
PE44205	.375	.047	.083	.075	.250	.440	.200
PE44206	.375	.031	.050	.045	.250	.440	.200
PE44207	.375	.042	.083	.075	.250	.440	.200
PE44208	.375	.047	.083	.075	.250	.440	.200
PE44134	.250	.042	.103	.070	.170	.380	.200
1. SOLID COPPER GROUND PLANE REQUIRED ON BOTTOMSIDE OF CIRCUIT BOARD.							

1. SOLID COPPER GROUND PLANE REQUIRED ON BOTTOMSIDE OF CIRCUIT BOARD.

NOTES:

1. UNLESS OTHERWISE SPECIFIED ALL DIMENSIONS ARE NOMINAL.
2. ALL SPECIFICATIONS ARE SUBJECT TO CHANGE WITHOUT NOTICE AT ANY TIME.
3. DIMENSIONS ARE IN INCHES [mm].
4. FITS MIL-C-17 AND EQUIVALENT CABLES.



DWG TITLE

PE4543



Phone: (949) 261-1920 | Fax: (949) 261-7451
Website: www.pasternack.com | E-Mail: sales@pasternack.com

FSCM NO. 53919

CAD FILE 032513-A

SCALE N/A

SIZE A

2233