



SMA Female Bulkhead Precision Connector Solder  
Attachment Stub Terminal, .250 inch Diameter

TECHNICAL DATA SHEET

PE44344

**SMA Female Bulkhead Precision Connector Solder Attachment Stub Terminal, .250 inch Diameter**

**Configuration**

Connector	SMA Female
Connector Interface Type	Stub
Cable Attachment Method (Shield/Contact)	Solder
Connector Design	Precision
Body Style	Straight
Mount Method	Bulkhead

**Electrical Specifications**

Frequency Range, GHz	DC to 27
Impedance, Ohms	50
Maximum VSWR	1.2:1
Maximum Insertion Loss, dB	0.26

**Mechanical Specifications**

**Size**

Length, in [mm]	0.66 [16.76]
Width/Dia., in [mm]	0.25 [6.35]
Weight, lbs [g]	0.006 [2.72]

**Connector**

Type	SMA Female
Contact Material and Plating	Beryllium Copper, Gold
Contact Plating Specification	MIL-G-45204, Type II, Class 1
Body Material and Plating	Passivated Stainless Steel, Gold
Body Plating Specification	MIL-G-45204
Dielectric Type	PTFE

**Compliance Certifications** (visit [www.Pasternack.com](http://www.Pasternack.com) for current document)

RoHS Compliant	Yes
----------------	-----

Click the following link (or enter part number in "SEARCH" on website) to obtain additional part information including price, inventory and certifications: [SMA Female Bulkhead Precision Connector Solder Attachment Stub Terminal, .250 inch Diameter PE44344](#)

The information contained in this document is accurate to the best of our knowledge and representative of the part described herein. It may be necessary to make modifications to the part and/or the documentation of the part, in order to implement improvements. Pasternack reserves the right to make such changes as required. Unless otherwise stated, all specifications are nominal.



## SMA Female Bulkhead Precision Connector Solder Attachment Stub Terminal, .250 inch Diameter

### TECHNICAL DATA SHEET

PE44344

#### Plotted and Other Data

Notes:

Values at 25 °C, sea level

SMA Female Bulkhead Precision Connector Solder Attachment Stub Terminal, .250 inch Diameter from Pasternack Enterprises has same day shipment for domestic and International orders. Our RF, microwave and fiber optic products maintain a 99% availability and are part of the broadest selection in the industry.

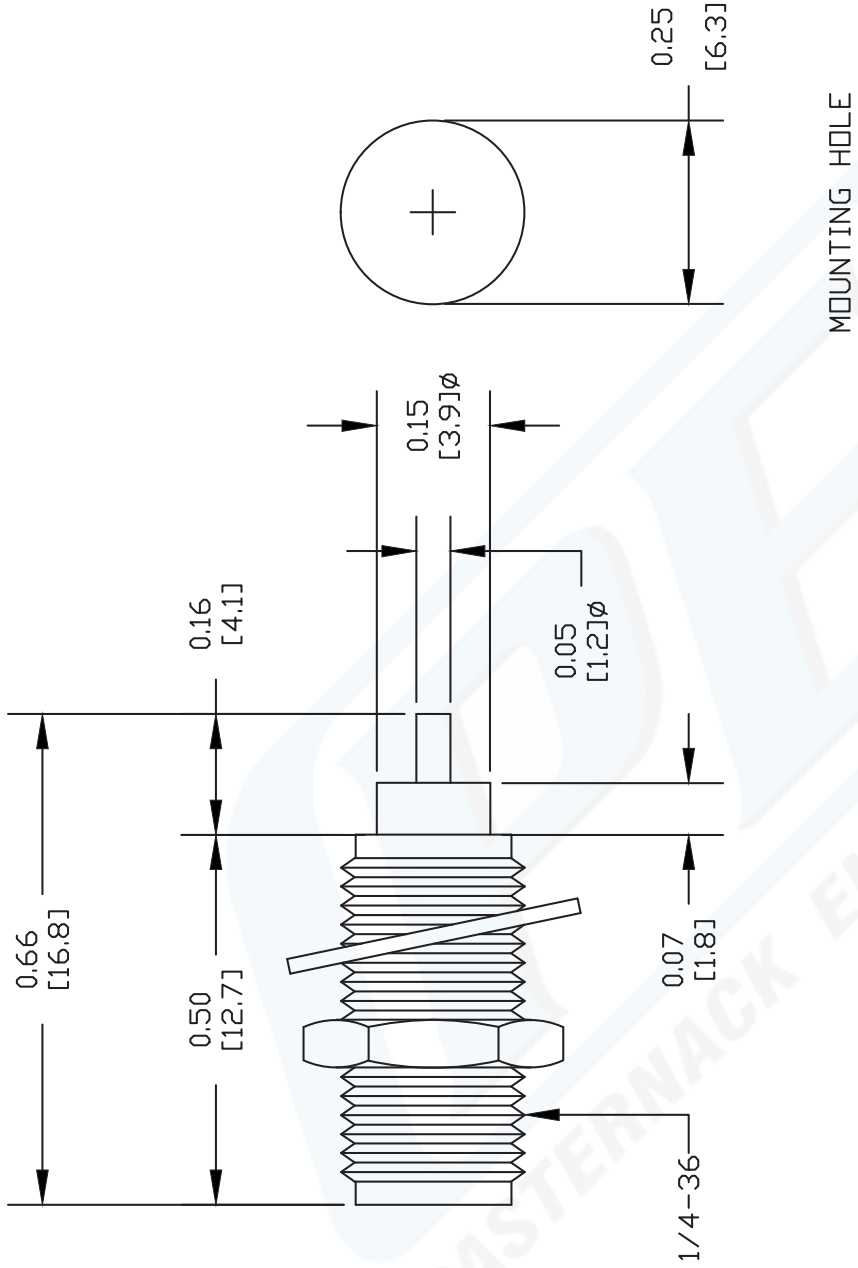
Click the following link (or enter part number in "SEARCH" on website) to obtain additional part information including price, inventory and certifications: [SMA Female Bulkhead Precision Connector Solder Attachment Stub Terminal, .250 inch Diameter PE44344](http://www.pasternack.com/sma-female-standard-stub-terminal-connector-pe44344-p.aspx)

URL: <http://www.pasternack.com/sma-female-standard-stub-terminal-connector-pe44344-p.aspx>

The information contained in this document is accurate to the best of our knowledge and representative of the part described herein. It may be necessary to make modifications to the part and/or the documentation of the part, in order to implement improvements. Pasternack reserves the right to make such changes as required. Unless otherwise stated, all specifications are nominal.

PE44344 CAD Drawing

SMA Female Bulkhead Precision Connector Solder  
Attachment Stub Terminal, .250 inch Diameter



NOTES:  
1. UNLESS OTHERWISE SPECIFIED ALL DIMENSIONS ARE NOMINAL.  
2. ALL SPECIFICATIONS ARE SUBJECT TO CHANGE WITHOUT NOTICE AT ANY TIME.  
3. DIMENSIONS ARE IN INCHES [mm].  
4. FITS MIL-C-17 AND EQUIVALENT CABLES.

DWG TITLE  
**PE44344**

FSCM NO. 53919

SIZE A

SCALE N/A

CAD FILE 102710

XXXX

**P****ASTERNACK**<sup>®</sup>  
Pasternack Enterprises, Inc.  
P.O. Box 16759 | Irvine | CA | 92623  
Phone: (949) 261-1920 | Fax: (949) 261-7451  
Website: [www.pasternack.com](http://www.pasternack.com) | E-Mail: [sales@pasternack.com](mailto:sales@pasternack.com)