



SMA Female Connector Solder Attachment .047 inch
End Launch PCB, .020 inch x .010 inch Contact

RF Connectors Technical Data Sheet

PE44208

Configuration

- SMA Female Connector
- MIL-STD-348
- 50 Ohms
- Straight Body Geometry
- .047 inch End Launch Interface Type
- Solder Attachment

Features

- Gold Plated Contact
- Contact plating according to MIL-G-45204

Applications

- General Purpose Test
- PCB Applications

Description

Pasternack's PE44208 SMA female connector with solder attachment for .047 inch end launch PCB is part of our full line of RF components available for same-day shipping.

Our SMA female connector PE44208 datasheet specifications and drawing with dimensions are shown below in this PDF. Pasternack's broad catalog of RF, microwave and millimeter wave connectors allows designers to configure and customize their signal connections however they like. Whether the need is to provide an I/O for a board design, or simply create a custom cable assembly configuration, Pasternack has the right connector for the job. Pasternack can also expertly build your custom cable assemblies for you and ship same-day.

Mechanical Specifications

Size

Length	0.562 in [14.27 mm]
Width/Dia.	0.375 in [9.53 mm]
Height	0.312 in [7.92 mm]
Weight	0.005 lbs [2.27 g]

Material Specifications

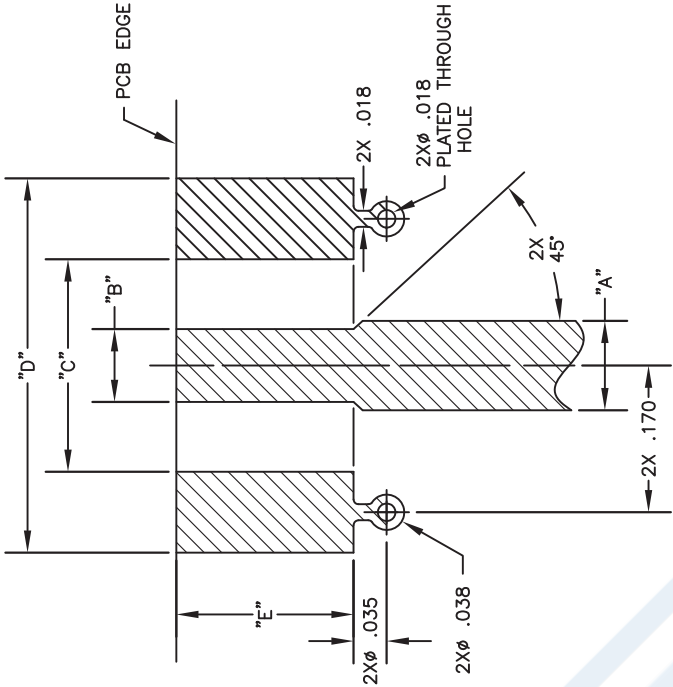
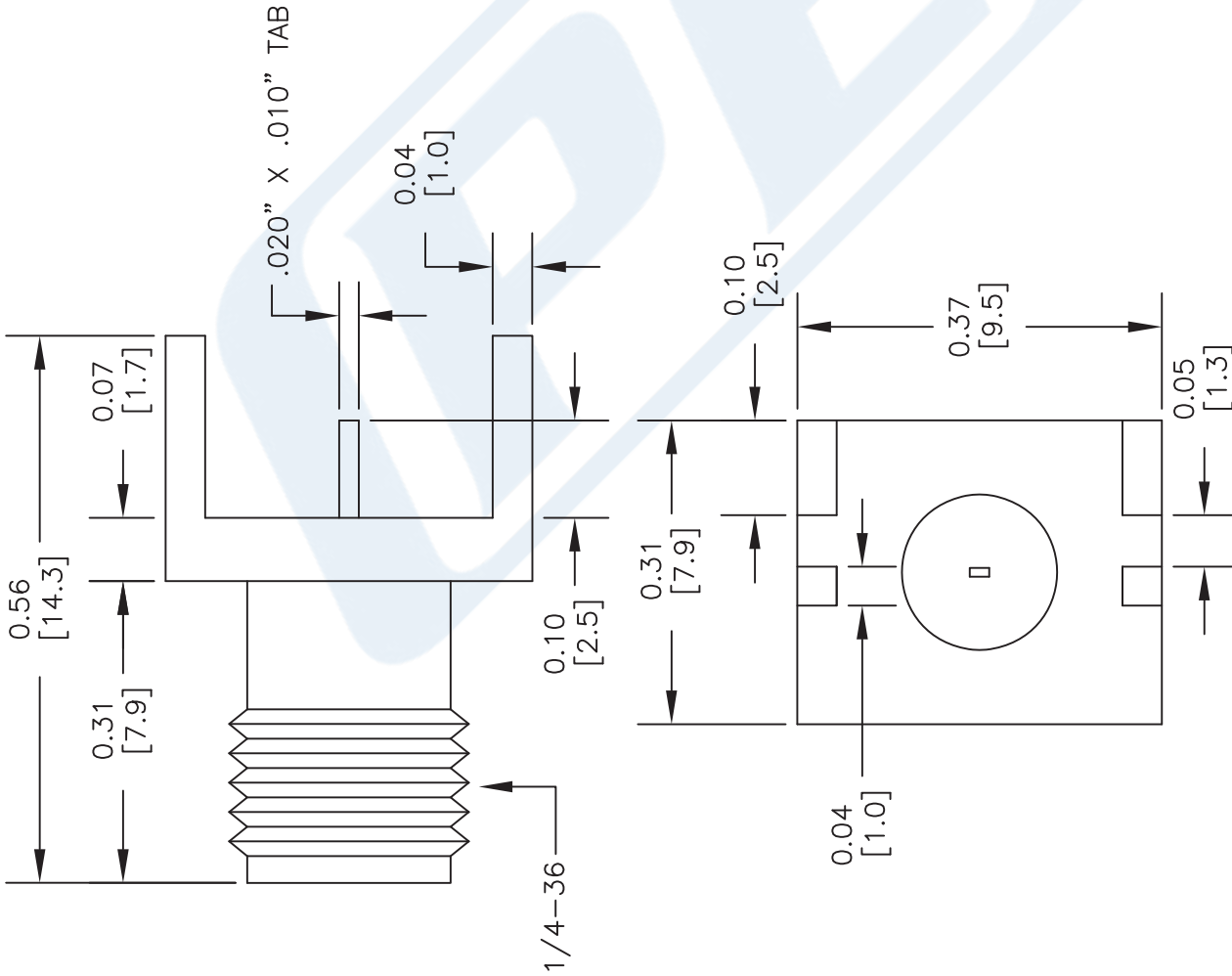
Description	Material	Plating
Contact		Gold MIL-G-45204
Insulation	PTFE	
Body	Brass	Gold MIL-G-45204

Click the following link (or enter part number in "SEARCH" on website) to obtain additional part information including price, inventory and certifications: [SMA Female Connector Solder Attachment .047 inch End Launch PCB, .020 inch x .010 inch Contact PE44208](#)

PE44208 CAD Drawing

SMA Female Connector Solder Attachment .047 inch End

Launch PCB, .020 inch x .010 inch Contact



MOUNTING CHART							
PART NO.	BASE WIDTH	BOARD THICK	"A"	"B"	"C"	"D"	"E"
PE4542	.375	.062	.103	.090	.250	.440	.200
PE4543	.375	.062	.103	.090	.250	.440	.200
PE44205	.375	.047	.083	.075	.250	.440	.200
PE44206	.375	.031	.050	.045	.250	.440	.200
PE44207	.375	.042	.083	.075	.250	.440	.200
PE44208	.375	.047	.083	.075	.250	.440	.200
PE44134	.250	.042	.103	.070	.170	.380	.200

1. SOLID COPPER GROUND PLANE REQUIRED ON BOTTOMSIDE OF CIRCUIT BOARD.

1. SOLID COPPER GROUND PLANE REQUIRED ON BOTTOMSIDE OF CIRCUIT BOARD.

DWG TITLE

PE44208

NOTES:
1. UNLESS OTHERWISE SPECIFIED ALL DIMENSIONS ARE NOMINAL.
2. ALL SPECIFICATIONS ARE SUBJECT TO CHANGE WITHOUT NOTICE AT ANY TIME.
3. DIMENSIONS ARE IN INCHES [mm].
4. FITS MIL-C-17 AND EQUIVALENT CABLES.

PE PASTERNAK®
Pasternack Enterprises, Inc.
P.O. Box 16759 | Irvine | CA | 92623

Phone: (949) 261-1920 | Fax: (949) 261-7451
Website: www.pasternack.com | E-Mail: sales@pasternack.com

FSCM NO. 53919

SCALE N/A

SIZE A

2233