



## SMA Female Bulkhead to MMCX Plug Right Angle Cable Using RG188-DS Coax

### RF Cable Assemblies Technical Data Sheet

PE3W00934

#### Configuration

- Connector 1: SMA Female Bulkhead
- Connector 2: MMCX Plug Right Angle
- Cable Type: RG188-DS

#### Features

- Max Frequency 6 GHz
- Double Shielded
- PTFE Jacket



#### Applications

- General Purpose
- Laboratory Use

#### Description

Pasternack's PE3W00934 SMA female bulkhead to MMCX plug right angle cable using RG188-DS coax is part of our full line of RF components available for same-day shipping. Pasternack's flexible RF cable assemblies are ideal for applications where tight bends and flexure are required. This Pasternack SMA to MMCX cable assembly has a female to plug gender configuration with 50 ohm flexible RG188-DS coax. The PE3W00934 SMA female to MMCX plug cable assembly operates to 6 GHz. The right angle MMCX interface on the RG188-DS cable allows for easier connections in tight spaces. Our RF cable assembly with SMA bulkhead interface allows designers to create external connections on their product enclosures, and can be used in a variety of other rack mount and panel mount applications. The double shielding of this Pasternack cable assembly provides excellent shielding effectiveness.

Custom versions of most RF cable assemblies can be built and shipped same day. Custom cable assembly lengths can be obtained by specifying the desired length on the web site at time of order or by contacting a sales representative. Other available RF cable assembly value added services include connector orientation or clocking, heat shrink booting and custom labeling. RF testing can also be performed to document the electrical performance of your cable assembly.

#### Electrical Specifications

Description	Minimum	Typical	Maximum	Units
Frequency Range	DC		6	GHz
VSWR			1.6:1	
Capacitance		32 [104.99]		pF/ft [pF/m]

Click the following link (or enter part number in "SEARCH" on website) to obtain additional part information including price, inventory and certifications: [SMA Female Bulkhead to MMCX Plug Right Angle Cable Using RG188-DS Coax PE3W00934](#)



## SMA Female Bulkhead to MMCX Plug Right Angle Cable Using RG188-DS Coax

### RF Cable Assemblies Technical Data Sheet

PE3W00934

#### Specifications by Frequency

Description	F1	F2	F3	F4	F5	Units
Frequency	0.25	0.5	1	2.5	6	GHz
Insertion Loss (Max.)	0.15	0.2	0.3	0.48	0.9	dB/ft
	0.49	0.66	0.98	1.57	2.95	dB/m

#### Electrical Specification Notes:

Insertion Loss does not include the loss of the connectors. Insertion Loss is estimated as 0.3dB connector loss.

#### Mechanical Specifications

##### Cable Assembly

Weight 0.014 lbs [6.35 g]

##### Cable

Cable Type RG188-DS  
 Impedance 50 Ohms  
 Inner Conductor Type Stranded  
 Inner Conductor Material and Plating Copper Clad Steel, Silver  
 Dielectric Type PTFE  
 Number of Shields 2  
 Shield Layer 1 Silver Plated Copper Braid  
 Shield Layer 2 Silver Plated Copper Braid  
 Jacket Material PTFE, White  
 Jacket Diameter 0.122 in [3.1 mm]

#### Connectors

Description	Connector 1	Connector 2
Type	SMA Female Bulkhead	MMCX Plug Right Angle
Specification		BS EN 122340
Impedance	50 Ohms	50 Ohms
Contact Material and Plating		Brass, Gold
Contact Plating Specification		30µ in. minimum
Dielectric Type		Teflon
Body Material and Plating	Brass, Nickel	Brass, Gold
Body Plating Specification		3µ in. minimum

#### Mechanical Specification Notes:

\*All cable assemblies have a length tolerance of 1.5% or  $\pm 3/8"$ , whichever is greater.

Click the following link (or enter part number in "SEARCH" on website) to obtain additional part information including price, inventory and certifications: [SMA Female Bulkhead to MMCX Plug Right Angle Cable Using RG188-DS Coax PE3W00934](#)



SMA Female Bulkhead to MMCX Plug Right Angle  
Cable Using RG188-DS Coax

RF Cable Assemblies Technical Data Sheet

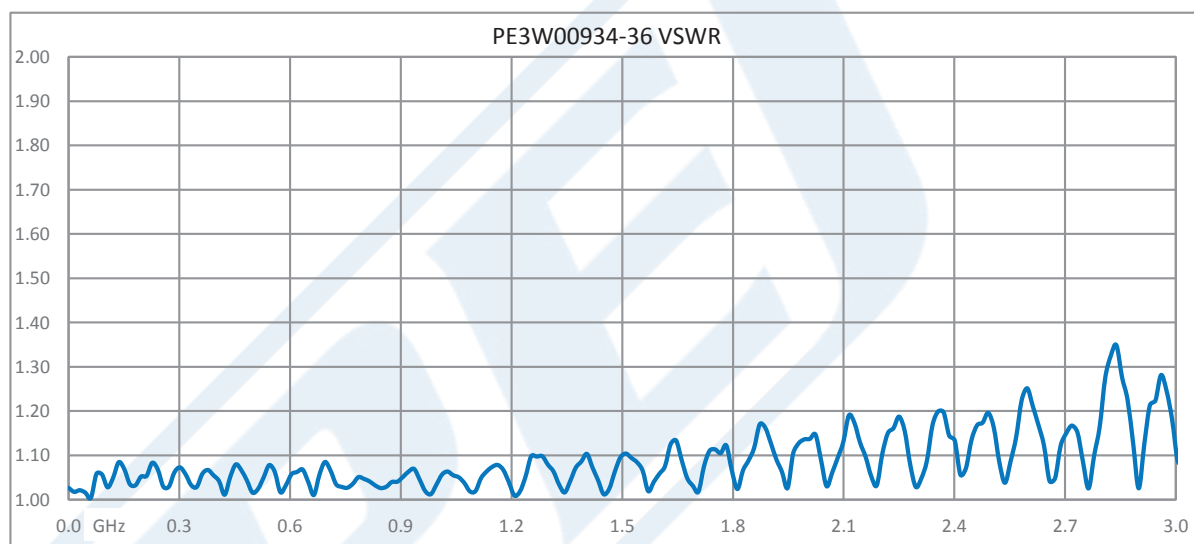
PE3W00934

**Compliance Certifications** (see [product page](#) for current document)

**Plotted and Other Data**

Notes:

**Typical Performance Data**



Click the following link (or enter part number in "SEARCH" on website) to obtain additional part information including price, inventory and certifications: [SMA Female Bulkhead to MMCX Plug Right Angle Cable Using RG188-DS Coax PE3W00934](#)



## SMA Female Bulkhead to MMCX Plug Right Angle Cable Using RG188-DS Coax

### RF Cable Assemblies Technical Data Sheet

PE3W00934

#### How to Order

Part Number Configuration:

**PE3W00934**

- **xx**

**uu**

Unit of Measure:  
cm = Centimeters  
<blank> = Inches  
Length  
Base Number

Example: PE3W00934-12 = 12 inches long cable  
PE3W00934-100cm = 100 cm long cable

SMA Female Bulkhead to MMCX Plug Right Angle Cable Using RG188-DS Coax from Pasternack Enterprises has same day shipment for domestic and International orders. Our RF, microwave and millimeter wave products maintain a 99.4% availability and are part of the broadest selection in the industry.

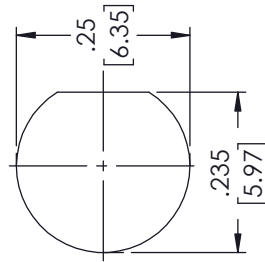
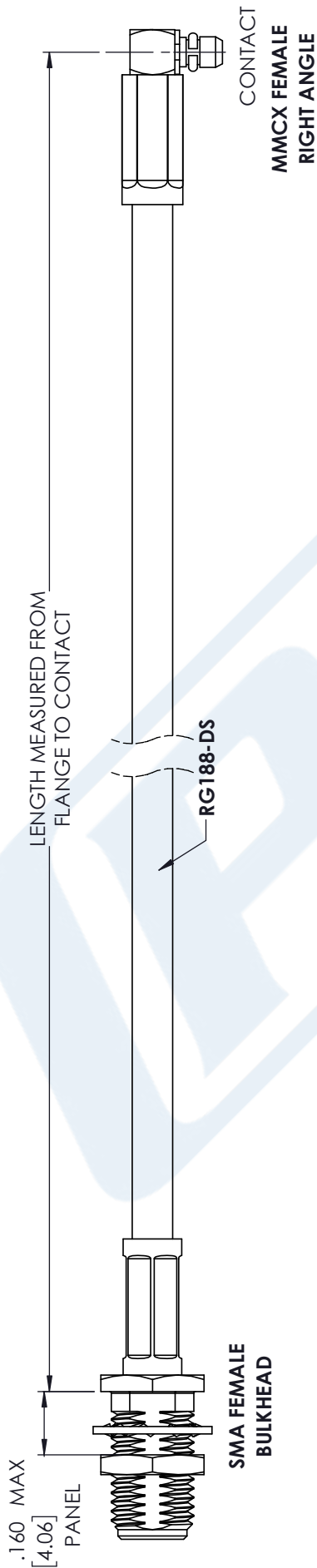
Click the following link (or enter part number in "SEARCH" on website) to obtain additional part information including price, inventory and certifications: [SMA Female Bulkhead to MMCX Plug Right Angle Cable Using RG188-DS Coax PE3W00934](#)

URL: <https://www.pasternack.com/sma-female-mmcx-plug-rg188-ds-cable-assembly-pe3w00934-p.aspx>

The information contained in this document is accurate to the best of our knowledge and representative of the part described herein. It may be necessary to make modifications to the part and/or the documentation of the part, in order to implement improvements. Pasternack reserves the right to make such changes as required. Unless otherwise stated, all specifications are nominal. Pasternack does not make any representation or warranty regarding the suitability of the part described herein for any particular purpose, and Pasternack does not assume any liability arising out of the use of any part or documentation.

PE3W00934 CAD Drawing

SMA Female Bulkhead to MMCX Plug Right Angle Cable Using RG188-DS Coax



MOUNTING HOLE

STANDARD TOLERANCES	
.X	±0.2
.XX	±0.01
.XXX	±0.005

\*STANDARD TOLERANCES APPLY ONLY TO DIMENSIONS IN INCHES



Pasternack Enterprises, Inc.  
P.O. Box 16759 | Irvine | CA | 92623  
Phone: (949) 261-1920 | Fax: (949) 261-7451  
Website: [www.pasternack.com](http://www.pasternack.com) | E-Mail: [sales@pasternack.com](mailto:sales@pasternack.com)

DWG TITLE

PE3W00934

CAGE CODE 53919

NOTES:  
1. UNLESS OTHERWISE SPECIFIED ALL DIMENSIONS ARE NOMINAL.  
2. ALL SPECIFICATIONS ARE SUBJECT TO CHANGE WITHOUT NOTICE AT ANY TIME.  
3. DIMENSIONS ARE IN INCHES [mm].

CAD FILE 10/23/18

SCALE N/A

SIZE A

CN2379