



## MIL-DTL-17 N Female Bulkhead to SMA Male Right Angle Cable 12 Inch Length Using M17/60-RG142 Coax

### RF Cable Assemblies Technical Data Sheet

PE3M0021-12

#### Configuration

- Connector 1: M39012/03-0503(N Female Bulkhead)
- Connector 2: M39012/56-3109(SMA Male Right Angle)
- Cable: M17/60-RG142

#### Features

- Max Frequency 11 GHz
- 69.5% Phase Velocity
- Double Shielded
- FEP Jacket
- Lot Traceability
- J-STD-Soldering
- Qualified (QPL) cable and connectors
- RF Test Plots
- Test Report
- In stock and ready to ship

#### Applications

- Hi-Rel
- MIL-DTL-17 Requirements
- Avionics
- IFF
- SATCOM
- ECM

#### Description

Pasternack's MIL-DTL-17 cable assemblies are part of our full line of reliable RF components available for same-day shipping. These commercial-off-the-shelf (COTS), military grade cable assemblies are designed and processed with high reliability in mind. MIL-PRF-39012 connectors and MIL-C-17 coaxial cable are assembled using J-STD soldering processes and WHMA-A-620 workmanship criteria. The combination of materials, processing and acceptance testing work together to create a dependable cable assembly for applications where performance over time is important or the cost of failure is high. Each finished MIL-DTL-17 cable assembly is traceable to its component lots and a test report is available for every lot produced.

Our MIL-DTL-17 cable assembly datasheet specifications and drawing with dimensions are shown below in this PDF. Pasternack's broad catalog of RF, microwave and millimeter wave cable assemblies allow designers to configure and customize their signal connections however they like. Whether the need is to provide reliable mil-spec connections or fielding dependable RF cable assemblies, Pasternack has the right cable assemblies for the job. Pasternack can also expertly build your custom cable assemblies for you and ship same day.

#### Referenced Specifications

IPC/WHMA-A-620  
MIL-DTL-17  
MIL-STD-348

MIL-PRF-39012  
IPC J-STD-001  
IPC J-STD-006

SAE AS5942  
SAE AS23053

Requirements and Acceptance for Cable and Wire Harness Assemblies  
Cables, Radio Frequency, Flexible and Semirigid, General Specification for  
Radio Frequency Connector Interfaces for MIL-DTL-3643, MIL-DTL-3650, MIL-DTL-3655, MIL-DTL-25516, MIL-PRF-31031, MIL-PRF-39012, MIL-PRF-49142, MIL-PRF...  
Connectors, Coaxial, Radio Frequency, General Specification for  
Requirements for Soldered Electrical and Electronic Assemblies  
Requirements for Electronic Grade Solder Alloys and Fluxed and Non-Fluxed Solid Solders for  
Electronic Soldering Applications  
Marking of Electrical Insulating Materials  
Insulation Sleeving, Electrical, Heat Shrinkable, General Specifications For

Click the following link (or enter part number in "SEARCH" on website) to obtain additional part information including price, inventory and certifications: [MIL-DTL-17 N Female Bulkhead to SMA Male Right Angle Cable 12 Inch Length Using M17/60-RG142 Coax PE3M0021-12](#)



# MIL-DTL-17 N Female Bulkhead to SMA Male Right Angle Cable 12 Inch Length Using M17/60-RG142 Coax

## RF Cable Assemblies Technical Data Sheet

PE3M0021-12

SAE AS22520

Crimping Tools, Wire Termination, General Specification For

### Material Specifications

| Component     | Specification                                   |
|---------------|---|
| Cable         | M17/60-RG142 in accordance with MIL-DTL-17      |
| Connector 1   | M39012/03-0503 in accordance with MIL-PRF-39012 |
| Connector 2   | M39012/56-3109 in accordance with MIL-PRF-39012 |
| Heat Shrink 1 | M23053/5-106-0 in accordance with SAE AS23053   |
| Heat Shrink 2 | M23053/5-106-0 in accordance with SAE AS23053   |
| Solder        | SN63 in accordance with J-STD-006               |

### Electrical Specifications

| Description                          | Minimum | Typical      | Maximum | Units        |
|--------------------------------------|---------|--------------|---------|--------------|
| Frequency Range                      | DC      |              | 11      | GHz          |
| VSWR                                 |         |              | 1.7:1   |              |
| Velocity of Propagation              |         | 69.5         |         | %            |
| Capacitance                          |         | 29.3 [96.13] |         | pF/ft [pF/m] |
| Dielectric Withstanding Voltage (AC) |         |              | 1,000   | Vrms         |

### Specifications by Frequency

| Description           | F1   | F2   | F3   | F4   | F5   | Units |
|-----------------------|------|------|------|------|------|-------|
| Frequency             | 0.4  | 1    | 3    | 8    | 11   | GHz   |
| Insertion Loss (Max.) | 0.29 | 0.41 | 0.66 | 1.11 | 1.37 | dB    |

#### Electrical Specification Notes:

The Insertion Loss data above is based on the performance specifications of the coax cable used in this assembly. The Insertion Loss includes an estimated insertion loss of 0.15\*SQRT(GHz) dB maximum for the SMA Male connector and 0.1 dB for the N Female connector.

### Mechanical Specifications

#### Cable Assembly

| Description          | Minimum    | Typical    | Maximum      | Units   |
|----------------------|------------|------------|--------------|---------|
| Length*              | 12 [304.8] | 12 [304.8] | 12.5 [317.5] | in [mm] |
| Cable Outer Diameter | 0.19       | 0.195      | 0.2          | in      |

Click the following link (or enter part number in "SEARCH" on website) to obtain additional part information including price, inventory and certifications: [MIL-DTL-17 N Female Bulkhead to SMA Male Right Angle Cable 12 Inch Length Using M17/60-RG142 Coax PE3M0021-12](#)



# MIL-DTL-17 N Female Bulkhead to SMA Male Right Angle Cable 12 Inch Length Using M17/60-RG142 Coax

## RF Cable Assemblies Technical Data Sheet

PE3M0021-12

Weight 0.2 [90.72] lbs [g]

\*Length Tolerances: +0.5, -0 inches for Length ≤ 1 foot; +1, -0 inches for Length >1 to 5 feet; +2, -0 inches for Length >5 to 10 feet; +3, -0 inches for Length >10 to 25 feet and +2%, -0 inches for Length >25 feet.

### Cable Characteristics

| Description                          | Specification             |
|--------------------------------------|---------------------------|
| Cable Type                           | M17/60-RG142              |
| Impedance                            | 50 Ohms                   |
| Inner Conductor Type                 | Solid                     |
| Inner Conductor Material and Plating | Copper Clad Steel, Silver |
| Dielectric Type                      | PTFE                      |
| Number of Shields                    | 2                         |
| Shield Layer 1                       | Silver Clad Copper        |
| Shield Layer 2                       | Silver Clad Copper        |
| Outer Conductor Diameter             | 0.171 in [4.34 mm]        |
| Jacket Material                      | FEP                       |

### Connector Characteristics

| Description                           | Connector 1           | Connector 2          |
|---------------------------------------|-----------------------|----------------------|
| Type                                  | N Female Bulkhead     | SMA Male Right Angle |
| Specification                         | MIL-PRF-39012         | MIL-PRF-39012        |
| Impedance                             | 50 Ohms               | 50 Ohms              |
| Contact Material and Plating          | Phosphor Bronze, Gold | Brass, Gold          |
| Contact Plating Specification         | MIL-G-45204           | ASTM B488            |
| Dielectric Type                       | Teflon                | Teflon               |
| Outer Conductor Material and Plating  | Brass, Silver         |                      |
| Outer Conductor Plating Specification | QQ-S-365              |                      |
| Body Material and Plating             | Brass, Silver         | Steel, Gold          |
| Body Plating Specification            | QQ-S-365              | ASTM B488            |
| Coupling Nut Material and Plating     | Brass, Silver         | Steel, Passivated    |
| Coupling Nut Plating Specification    | QQ-S-365              | AMS-QQ-P-35          |
| Seal Gasket Material                  | Silicone Rubber       | Silicone Rubber      |
| Contact Gage Specification            | 0.187 to 0.207 in     | 0.000 in min         |
| Insulator Gage Specification          |                       | 0.000 in min         |

### Mechanical Specification Notes:

Click the following link (or enter part number in "SEARCH" on website) to obtain additional part information including price, inventory and certifications: [MIL-DTL-17 N Female Bulkhead to SMA Male Right Angle Cable 12 Inch Length Using M17/60-RG142 Coax PE3M0021-12](#)



MIL-DTL-17 N Female Bulkhead to SMA Male Right Angle  
Cable 12 Inch Length Using M17/60-RG142 Coax

RF Cable Assemblies Technical Data Sheet

PE3M0021-12

**Environmental Specifications**

| Description                 | Specification     |
|-----------------------------|-------------------|
| Temperature Operating Range | -55 to +165 deg C |

**Compliance Certifications** (see [product page](#) for current document)

**Process Specifications**

| Process     | Specification                                       |
|-------------|---|
| Soldering   | in accordance with J-STD-001, class 3               |
| Crimping    | dies in accordance with SAE AS22520                 |
| Marking     | shall meet the adherence requirements of SAE AS5942 |
| Workmanship | shall be in accordance with IPC/WHMA-A-620, class 3 |

**Tests and Inspections**

| Description                                     | Sampling     |
|---|--------------|
| Connector Gaging (pin and insulator position)   | 100%         |
| Insertion Loss                                  | 100%         |
| VSWR  | 100%         |
| Dielectric Withstanding Voltage (DWV)           | 100%         |
| Visual - workmanship, configuration and marking | 100%         |
| Length  | C=0, 1.5 AQL |
| Mass  | C=0, 1.5 AQL |

**Plotted and Other Data**

Notes:

- Values at 25°C, sea level.

Click the following link (or enter part number in "SEARCH" on website) to obtain additional part information including price, inventory and certifications: [MIL-DTL-17 N Female Bulkhead to SMA Male Right Angle Cable 12 Inch Length Using M17/60-RG142 Coax PE3M0021-12](#)



MIL-DTL-17 N Female Bulkhead to SMA Male Right Angle  
Cable 12 Inch Length Using M17/60-RG142 Coax

RF Cable Assemblies Technical Data Sheet

PE3M0021-12

**How to Order**

Part Number Configuration:

**PE3M0021**

**- xx**

**uu**

Unit of Measure:  
cm = Centimeters  
<blank> = Inches  
Length  
Base Number

Example: PE3M0021-12 = 12 inches long cable  
PE3M0021-100cm = 100 cm long cable

MIL-DTL-17 N Female Bulkhead to SMA Male Right Angle Cable 12 Inch Length Using M17/60-RG142 Coax from Pasternack Enterprises has same day shipment for domestic and International orders. Our RF, microwave and millimeter wave products maintain a 99.4% availability and are part of the broadest selection in the industry.

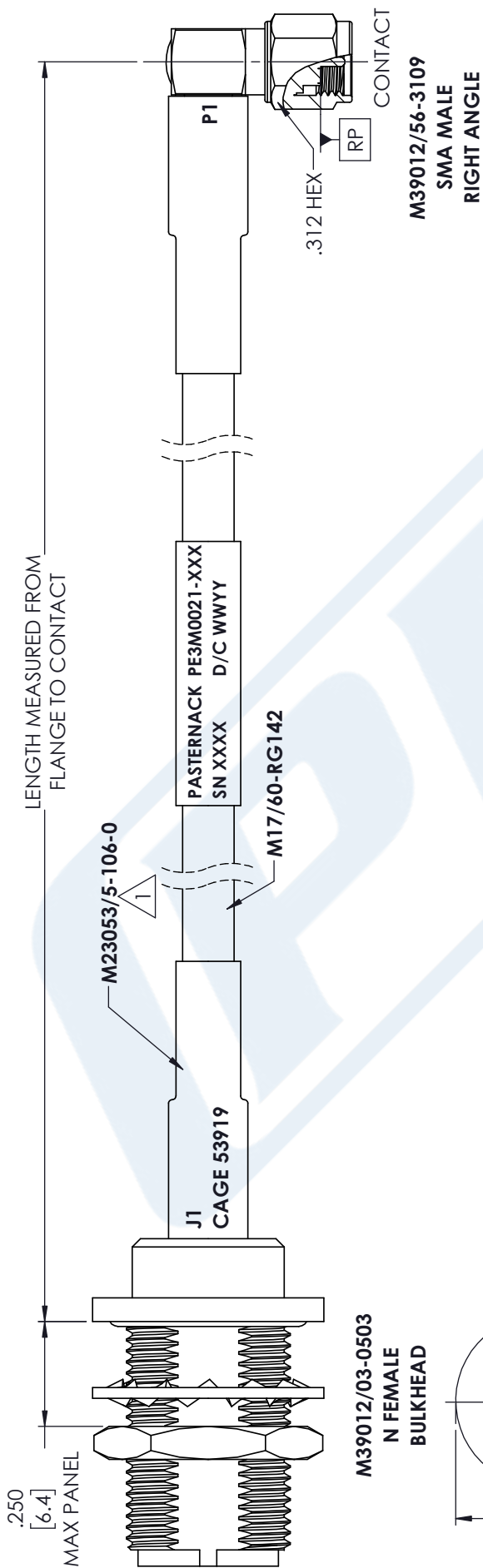
Click the following link (or enter part number in "SEARCH" on website) to obtain additional part information including price, inventory and certifications: [MIL-DTL-17 N Female Bulkhead to SMA Male Right Angle Cable 12 Inch Length Using M17/60-RG142 Coax PE3M0021-12](https://www.pasternack.com/n-female-sma-male-m17-60-rg142-cable-assembly-pe3m0021-12-p.aspx)

URL: <https://www.pasternack.com/n-female-sma-male-m17-60-rg142-cable-assembly-pe3m0021-12-p.aspx>

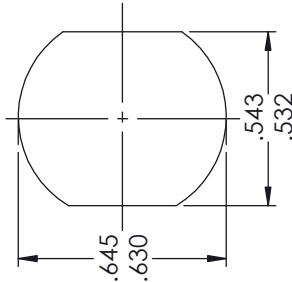
The information contained in this document is accurate to the best of our knowledge and representative of the part described herein. It may be necessary to make modifications to the part and/or the documentation of the part, in order to implement improvements. Pasternack reserves the right to make such changes as required. Unless otherwise stated, all specifications are nominal. Pasternack does not make any representation or warranty regarding the suitability of the part described herein for any particular purpose, and Pasternack does not assume any liability arising out of the use of any part or documentation.

PE3M0021-12 CAD Drawing

MIL-DTL-17 N Female Bulkhead to SMA Male Right Angle  
Cable 12 Inch Length Using M17/60-RG142 Coax



M39012/03-0503  
N FEMALE  
BULKHEAD



MOUNTING HOLE

STANDARD TOLERANCES

- .X ±0.2
- .XX ±0.01
- .XXX ±0.005

\*STANDARD TOLERANCES APPLY ONLY TO DIMENSIONS IN INCHES

NOTES:

1. BLACK HEAT SHRINK WITH WHITE MARKINGS 3 PLACES.



Pasternack Enterprises, Inc.  
P.O. Box 16759 | Irvine | CA | 92623  
Phone: (949) 261-1920 | Fax: (949) 261-7451  
Website: www.pasternack.com | E-Mail: sales@pasternack.com

DWG TITLE

PE3M0021

- NOTES:
1. UNLESS OTHERWISE SPECIFIED ALL DIMENSIONS ARE NOMINAL.
  2. ALL SPECIFICATIONS ARE SUBJECT TO CHANGE WITHOUT NOTICE AT ANY TIME.
  3. DIMENSIONS ARE IN INCHES [mm].

CAGE CODE 53919

CAD FILE 09/10/18

SCALE N/A

SIZE A

CN2379