



## SMA Female to SSMC Jack Bulkhead Cable 24 Inch Length Using RG178 Coax

### RF Cable Assemblies Technical Data Sheet

PE3C4394-24

#### Configuration

- Connector 1: SMA Female
- Connector 2: SSMC Jack Bulkhead
- Cable Type: RG178

#### Features

- SSMC Cable Assembly Max. Operating Frequency of 2 GHz
- Small SSMC cable connection form factor (50% smaller than SMA, radially)
- Reliable threaded coupling
- In stock and ready to ship

#### Applications

- SSMC Cable General Purpose Test
- Data Acquisition Systems
- A/D Conversion Systems
- Ultra Wideband Digital Receivers
- Software defined radio (SDR)

#### Description

Pasternack's SSMC cable assemblies are part of our full line of RF components available for same-day shipping. These SSMC cable assemblies are designed to connect SSMC system components and test connections, delivering signal frequencies as high as 12.4 GHz. Our family of SSMC cables can also be used to connect SSMC ports on data acquisition systems, A/D modules or SSMC coax patch panels. If none of our standard options fit your application, you can specify your own custom SSMC cable assembly using Pasternack's online Cable Creator.

Our SSMC cable assembly datasheet specifications and drawing with dimensions are shown below in this PDF. Pasternack's broad catalog of RF, microwave and millimeter wave cable assemblies allow designers to configure and customize their signal connections however they like. Whether the need is to provide SSMC cabling for a data acquisition system, or simply create a custom cable assembly configuration, Pasternack has the right cable assemblies for the job. Pasternack can also expertly build your custom cable assemblies for you and ship same day.

#### Electrical Specifications

Description	Minimum	Typical	Maximum	Units
Frequency Range	DC		2	GHz
VSWR			1.6:1	
Velocity of Propagation		70		%
Capacitance		29.4 [96.46]		pF/ft [pF/m]

Click the following link (or enter part number in "SEARCH" on website) to obtain additional part information including price, inventory and certifications: [SMA Female to SSMC Jack Bulkhead Cable 24 Inch Length Using RG178 Coax PE3C4394-24](#)



SMA Female to SSMC Jack Bulkhead Cable  
24 Inch Length Using RG178 Coax

RF Cable Assemblies Technical Data Sheet

PE3C4394-24

**Specifications by Frequency**

Description	F1	F2	F3	F4	F5	Units
Frequency	100	400	1,000			MHz
Insertion Loss (Typ.)	0.48	0.76	1.09			dB

**Mechanical Specifications**

**Cable Assembly**

Length*	24 in [609.6 mm]
Diameter	0.312 in [7.92 mm]

**Cable**

Cable Type	RG178
Impedance	50 Ohms
Inner Conductor Type	Stranded
Inner Conductor Material and Plating	Copper Clad Steel, Silver
Dielectric Type	PTFE
Number of Shields	1
Shield Layer 1	Silver Plated Copper Braid
Jacket Material	FEP, Tan
Jacket Diameter	0.072 in [1.83 mm]
Repeated Minimum Bend Radius	0.4 in [10.16 mm]

Click the following link (or enter part number in "SEARCH" on website) to obtain additional part information including price, inventory and certifications: [SMA Female to SSMC Jack Bulkhead Cable 24 Inch Length Using RG178 Coax PE3C4394-24](#)



SMA Female to SSMC Jack Bulkhead Cable  
24 Inch Length Using RG178 Coax

RF Cable Assemblies Technical Data Sheet

PE3C4394-24

**Connectors**

Description	Connector 1	Connector 2
Type	SMA Female	SSMC Jack Bulkhead
Specification	MIL-STD-348	
Impedance	50 Ohms	50 Ohms
Mating Cycles		500
Contact Material and Plating	Beryllium Copper, Gold	Beryllium Copper, Gold
Contact Plating Specification	MIL-G-45204	MIL-G-45204
Dielectric Type	PTFE	Teflon
Outer Conductor Material and Plating		Beryllium Copper, Gold
Outer Conductor Plating Specification		MIL-G-45204
Body Material and Plating	Brass, Nickel	Beryllium Copper, Gold
Body Plating Specification	QQ-N-290	MIL-G-45204
Torque		1.75 in-lbs [0.2 Nm]

Mechanical Specification Notes:

\*All cable assemblies have a length tolerance of 1.5% or  $\pm 3/8"$ , whichever is greater.

**Compliance Certifications** (see [product page](#) for current document)

**Plotted and Other Data**

Notes:

Click the following link (or enter part number in "SEARCH" on website) to obtain additional part information including price, inventory and certifications: [SMA Female to SSMC Jack Bulkhead Cable 24 Inch Length Using RG178 Coax PE3C4394-24](#)



SMA Female to SSMC Jack Bulkhead Cable  
24 Inch Length Using RG178 Coax

RF Cable Assemblies Technical Data Sheet

PE3C4394-24

**How to Order**

Part Number Configuration:

**PE3C4394**

- **xx**

**uu**

Unit of Measure:  
cm = Centimeters  
<blank> = Inches  
Length  
Base Number

Example: PE3C4394-12 = 12 inches long cable  
PE3C4394-100cm = 100 cm long cable

SMA Female to SSMC Jack Bulkhead Cable 24 Inch Length Using RG178 Coax from Pasternack Enterprises has same day shipment for domestic and International orders. Our RF, microwave and millimeter wave products maintain a 99.4% availability and are part of the broadest selection in the industry.

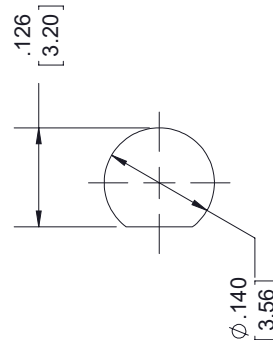
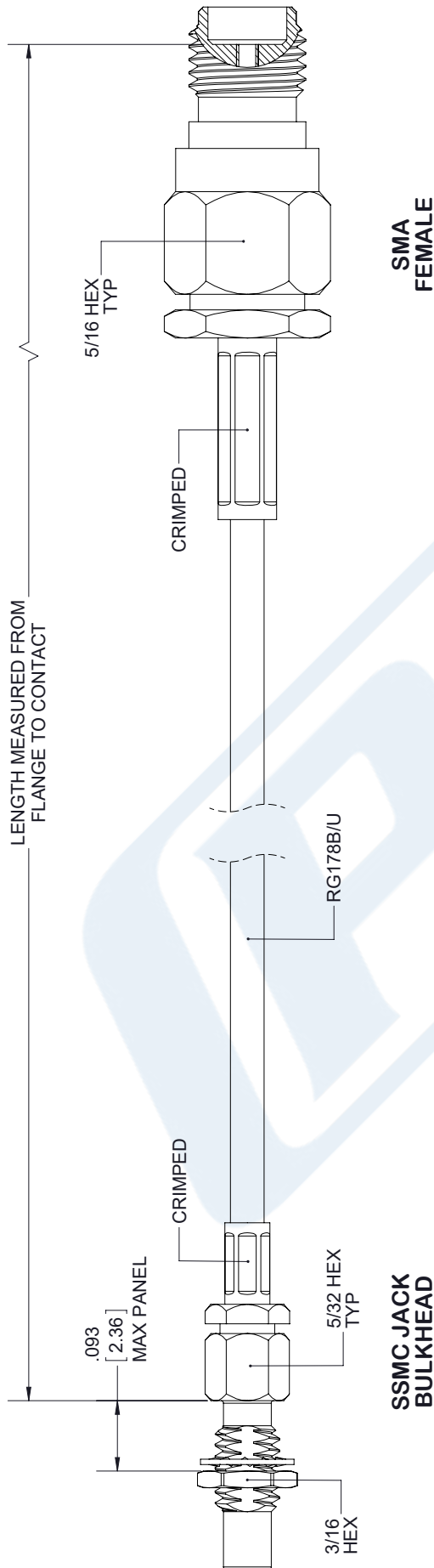
Click the following link (or enter part number in "SEARCH" on website) to obtain additional part information including price, inventory and certifications: [SMA Female to SSMC Jack Bulkhead Cable 24 Inch Length Using RG178 Coax PE3C4394-24](https://www.pasternack.com/sma-female-ssmc-jack-rg178bu-cable-assembly-pe3c4394-24-p.aspx)

URL: <https://www.pasternack.com/sma-female-ssmc-jack-rg178bu-cable-assembly-pe3c4394-24-p.aspx>

The information contained in this document is accurate to the best of our knowledge and representative of the part described herein. It may be necessary to make modifications to the part and/or the documentation of the part, in order to implement improvements. Pasternack reserves the right to make such changes as required. Unless otherwise stated, all specifications are nominal. Pasternack does not make any representation or warranty regarding the suitability of the part described herein for any particular purpose, and Pasternack does not assume any liability arising out of the use of any part or documentation.

# PE3C4394-24 CAD Drawing

SMA Female to SSMC Jack Bulkhead Cable 24 Inch Length Using RG178 Coax



## MOUNTING HOLE

### STANDARD TOLERANCES

.X  $\pm 0.2$   
.XX  $\pm 0.01$   
.XXX  $\pm 0.005$

\*STANDARD TOLERANCES APPLY ONLY TO DIMENSIONS IN INCHES



Pasternack Enterprises, Inc.  
P.O. Box 16759 | Irvine | CA | 92623  
Phone: (949) 261-1920 | Fax: (949) 261-7451  
Website: [www.pasternack.com](http://www.pasternack.com) | E-Mail: [sales@pasternack.com](mailto:sales@pasternack.com)

### DWG TITLE

PE3C4394

NOTES:  
1. UNLESS OTHERWISE SPECIFIED ALL DIMENSIONS ARE NOMINAL.  
2. ALL SPECIFICATIONS ARE SUBJECT TO CHANGE WITHOUT NOTICE AT ANY TIME.  
3. DIMENSIONS ARE IN INCHES [mm].

CAGE CODE 53919

CAD FILE 082217

SCALE N/A

SIZE A

9999