

SMA Female Bulkhead to MMCX Plug Cable 24 Inch Length Using RG316 Coax



RF Cable Assemblies Technical Data Sheet

PE35575-24

Configuration

- Connector 1: SMA Female Bulkhead
- Connector 2: MMCX Plug
- Cable Type: RG316

Features

- FEP Jacket



Applications

- General Purpose
- Laboratory Use

Description

Pasternack's PE35575-24 SMA female bulkhead to MMCX plug 24 inch cable using RG316 coax is part of our full line of RF components available for same-day shipping. Pasternack's flexible RF cable assemblies are ideal for applications where tight bends and flexure are required. This Pasternack SMA to MMCX cable assembly has a female to plug gender configuration with 50 ohm flexible RG316 coax. Our RF cable assembly with SMA bulkhead interface allows designers to create external connections on their product enclosures, and can be used in a variety of other rack mount and panel mount applications.

Custom versions of most RF cable assemblies can be built and shipped same day. Custom cable assembly lengths can be obtained by specifying the desired length on the web site at time of order or by contacting a sales representative. Other available RF cable assembly value added services include connector orientation or clocking, heat shrink booting and custom labeling. RF testing can also be performed to document the electrical performance of your cable assembly.

Electrical Specifications

| Description | Minimum | Typical | Maximum | Units |
|-------------|---------|-------------|---------|--------------|
| Capacitance | | 32 [104.99] | | pF/ft [pF/m] |

Mechanical Specifications

Cable Assembly

| | |
|----------|---------------------|
| Length* | 24 in [609.6 mm] |
| Diameter | 0.312 in [7.92 mm] |
| Weight | 0.023 lbs [10.43 g] |

Click the following link (or enter part number in "SEARCH" on website) to obtain additional part information including price, inventory and certifications: [SMA Female Bulkhead to MMCX Plug Cable 24 Inch Length Using RG316 Coax PE35575-24](#)



SMA Female Bulkhead to MMCX Plug Cable 24 Inch Length Using RG316 Coax

RF Cable Assemblies Technical Data Sheet

PE35575-24

Cable

| | |
|--------------------------------------|----------------------------|
| Cable Type | RG316 |
| Impedance | 50 Ohms |
| Inner Conductor Type | Stranded |
| Inner Conductor Material and Plating | Copper Clad Steel, Silver |
| Dielectric Type | PTFE |
| Number of Shields | 1 |
| Shield Layer 1 | Silver Plated Copper Braid |
| Jacket Material | FEP, Tan |
| Jacket Diameter | 0.098 in [2.49 mm] |

Connectors

| Description | Connector 1 | Connector 2 |
|-------------------------------|---------------------|-----------------|
| Type | SMA Female Bulkhead | MMCX Plug |
| Specification | | BS EN 122340 |
| Impedance | 50 Ohms | 50 Ohms |
| Contact Material and Plating | Gold | Brass, Gold |
| Contact Plating Specification | | 30μ in. minimum |
| Dielectric Type | | Teflon |
| Body Material and Plating | Brass, Nickel | Brass, Gold |
| Body Plating Specification | | 3μ in. minimum |

Mechanical Specification Notes:

*All cable assemblies have a length tolerance of 1.5% or $\pm 3/8"$, whichever is greater.

Environmental Specifications

Temperature

Operating Range -55 to +155 deg C

Compliance Certifications (see [product page](#) for current document)

Plotted and Other Data

Notes:

- Values at 25°C, sea level.

Click the following link (or enter part number in "SEARCH" on website) to obtain additional part information including price, inventory and certifications: [SMA Female Bulkhead to MMCX Plug Cable 24 Inch Length Using RG316 Coax PE35575-24](#)



SMA Female Bulkhead to MMCX Plug Cable 24 Inch Length Using RG316 Coax

RF Cable Assemblies Technical Data Sheet

PE35575-24

How to Order

Part Number Configuration:

PE35575

- **xx**

uu

Unit of Measure:
cm = Centimeters
<blank> = Inches
Length
Base Number

Example: PE35575-12 = 12 inches long cable
PE35575-100cm = 100 cm long cable

SMA Female Bulkhead to MMCX Plug Cable 24 Inch Length Using RG316 Coax from Pasternack Enterprises has same day shipment for domestic and International orders. Our RF, microwave and millimeter wave products maintain a 99.4% availability and are part of the broadest selection in the industry.

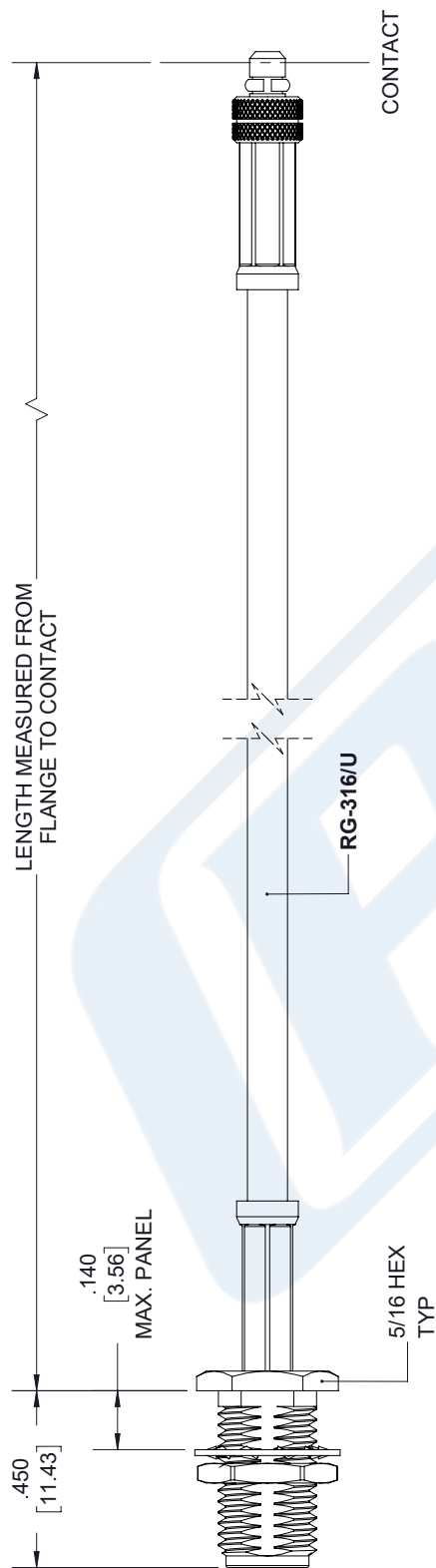
Click the following link (or enter part number in "SEARCH" on website) to obtain additional part information including price, inventory and certifications: [SMA Female Bulkhead to MMCX Plug Cable 24 Inch Length Using RG316 Coax PE35575-24](https://www.pasternack.com/sma-female-mmcx-plug-rg316u-cable-assembly-pe35575-24-p.aspx)

URL: <https://www.pasternack.com/sma-female-mmcx-plug-rg316u-cable-assembly-pe35575-24-p.aspx>

The information contained in this document is accurate to the best of our knowledge and representative of the part described herein. It may be necessary to make modifications to the part and/or the documentation of the part, in order to implement improvements. Pasternack reserves the right to make such changes as required. Unless otherwise stated, all specifications are nominal. Pasternack does not make any representation or warranty regarding the suitability of the part described herein for any particular purpose, and Pasternack does not assume any liability arising out of the use of any part or documentation.

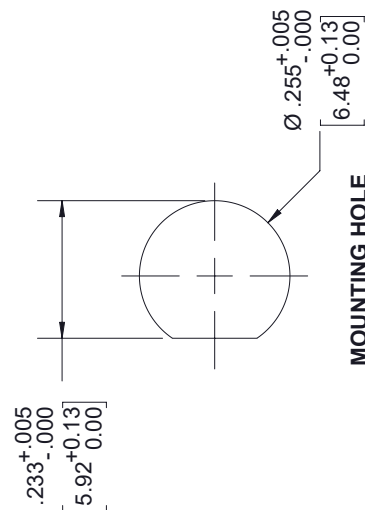
SMA Female Bulkhead to MMCX Plug Cable 24 Inch Length Using RG316 Coax

| REVISIONS | | | |
|-----------|----------------------|----------|----------|
| REV. | DESCRIPTION | DATE | APPROVED |
| A | PCR PE35575 20191031 | 11/05/19 | S.ELLIS |



**SMA FEMALE
BULKHEAD**

MMCX PLUG



THESE COMMODITIES, TECHNOLOGY OR SOFTWARE WERE EXPORTED FROM THE UNITED STATES IN ACCORDANCE WITH THE EXPORT ADMINISTRATION REGULATIONS. DIVERSION CONTRARY TO U.S. LAW PROHIBITED.

| | | | | | | | |
|--|--|----------|--|---|--|---|--|
| UNLESS OTHERWISE SPECIFIED LEADING DIMENSIONS ARE INCHES DIMENSIONS IN [] ARE MILLIMETERS | | | | THIRD-ANGLE PROJECTION | | | |
| TOLERANCES: | | | |  | | | |
| X ± .2 | | [.050] | | FRACTIONS | | THE INFORMATION AND CONTENTS OF THIS DOCUMENT IS THE PROPERTY OF PASTERNAK CORPORATION ALL RIGHTS RESERVED. | |
| XX ± .02 | | [.51] | | + 1/32 | | | |
| XXX ± .005 | | [.13] | | ANGLES ± 1° | | | |
| CABLE LENGTH (L) TOLERANCES: | | | | SHEET 1 OF 1 | | | |
| L ≤ 12 [305] = +1 [25] / -0 | | | | SCALE N/A | | | |
| 12 [305] < L ≤ 60 [1524] = +2 [51] / -0 | | | | | | | |
| 60 [1524] < L ≤ 120 [3048] = +4 [102] / -0 | | | | | | | |
| 120 [3048] < L ≤ 300 [7620] = +6 [152] / -0 | | | | | | | |
| 300 [7620] < L = +5% / -0 | | | | | | | |
| ALL DIMENSIONS SHOWN ARE FOR REFERENCE ONLY. | | | | SIZE A | | CAGE CODE 53919 | |
| | | | | DRAWN BY K.DANG | | PART NUMBER PE35575 | |
| | | | | | | REV A | |