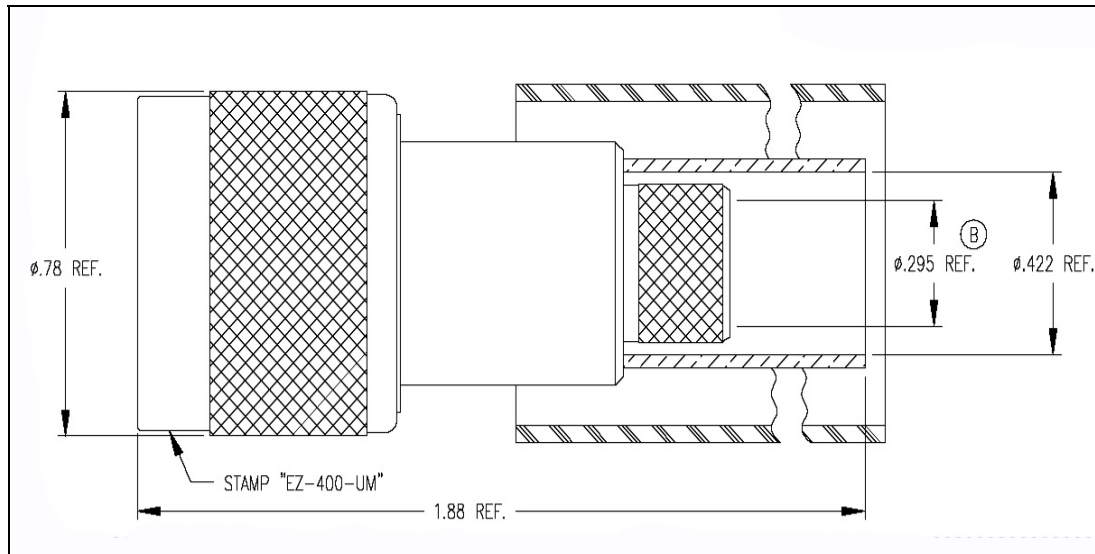


LTR	DESCRIPTION	DATE	BY
-	Released	10/14/00	JCL

**I. MATERIALS & FINISHES**

center contact: Gold Plated Beryllium Copper (non-solder)
 outer contact: Nickel Plated Brass
 body: Nickel Plated Brass
 coupling nut: Nickel Plated Brass
 crimp sleeve: Nickel Plated Copper
 dielectric: Teflon® PTFE
 gasket: Silicone Rubber
 shrink sleeve: Adhesive Lined Polyolefin
 crimp size: .429" hex

II. ELECTRICAL PROPERTIES

impedance: 50 ohms
 working voltage: 500 vrms (max)
 vswr: 1.25:1 (max) up to 1 GHz
 insertion loss: $0.1 \times \sqrt{f_{ghz}}$

Unless otherwise specified, dimensions are in inches. Tolerances are applicable when specified.

These drawings and specifications contain proprietary information which is the property of Times Microwave Systems.

Approvals

Drawn	JCL	10/14/00

**TIMES MICROWAVE SYSTEMS**

Wallingford, CT 06492
 (203) 949-8400; (203) 949-8423.Fax
 www.timesmicrowave.com

EZ-400-UM**EZ Install (non-solder)****Type-UHF Male (plug) for LMR-400 Cable**

Size A	CAGE CODE 68999	Drawing No.: 3190-977
-----------	---------------------------	---------------------------------

Scale: NA

Rev. (-)

Sheet: 1 of 1